

HYUNDAI L&C **Bodaq**

HYUNDAI L&C NEW COLLECTION
Creative and Environmental Interior Solution Provider

INTERIOR FILM 2024 — 2025



www.ebodaq.com

보닥 인테리어필름 디지털 샘플북 출시

QR코드를 스캔하여 온라인으로도 보닥 인테리어필름을 만나보세요

HYUNDAI

현대 L&C

Index.

01 BASIC S, PNC, SMT, ZSW, PTW, PNT, CP, HS, LM, LS

S				SMT		ZSW		PNT						
○ S115	16	○ S178	16	● S214	15	NEW ● S247	15	○ SMT01	22	○ ZSW04	25	● PNT03	27	
○ S126	16	○ S179	16	● S215	15	NEW ● S248	15	○ SMT02	22			● PNT04	27	
● S127	15	○ S181	16	○ S216	16	NEW ● S249	15	○ SMT03	22	PTW		● PNT05	27	
○ S128	16	○ S183	16	○ S217	15	NEW ● S250	14	● SMT04	24	○ PTW01	25	○ PNT06	27	
● S140	16	○ S185	15	● S218	14	NEW ● S251	14	● SMT05	24	● PTW02	25	● PNT07	27	
○ S141	16	○ S186	14	○ S219	15	NEW ● S252	14	● SMT06	24	○ PTW03	25	● PNT08	27	
○ S143	16	○ S188	14	○ S230	15	NEW ● S253	15	● SMT07	24	● PTW04	26	○ PNT09	27	
● S145	15	○ S189	14	● S231	16	NEW ● S254	14	● SMT08	24	○ PTW05	26	● PNT10	27	
○ S146	14	○ S194	14	○ S232	14	PNC		● SMT10	23	○ PTW06	26			
● S147	14	○ S195	15	● S233	15	○ PNC41	20	○ SMT11	23	● PTW07	26	CP		
● S149	16	● S197	16	● S234	15	○ PNC42	18	○ SMT12	22	○ PTW08	26		CP202	28
○ S150	14	○ S198	15	○ S235	16	○ PNC43	20	○ SMT13	22	○ PTW09	25	HS		
○ S153	15	○ S200	15	○ S236	16	○ PNC44	18	○ SMT14	24	○ PTW10	25		HS204	28
○ S156	16	○ S201	15	○ S237	15	○ PNC45	19	○ SMT15	24	○ PTW11	26	LM		
○ S157	16	○ S202	15	○ S238	15	○ PNC46	19	○ SMT16	22	○ PTW12	26		LM202	28
○ S158	16	○ S204	15	○ S239	15	○ PNC47	18	○ SMT17	22	○ PTW13	26	LS		
● S159	16	○ S207	15	○ S240	16	○ PNC49	18	○ SMT18	23	○ PTW14	26		LS102	28
○ S166	15	○ S208	16	○ S241	15	○ PNC50	20	○ SMT19	22	○ PTW15	26		LS103	28
○ S169	14	○ S209	16	○ S242	15	NEW ○ PNC51	18	○ SMT20	23	NEW ○ PTW16	25		LS104	28
○ S173	14	○ S210	16	○ S243	16	NEW ○ PNC52	18	○ SMT21	22				LS106	28
○ S175	14	○ S211	16	○ S244	16	NEW ○ PNC53	19	○ SMT22	23	PNT				
○ S176	16	○ S212	15	○ S245	16	NEW ○ PNC54	20	○ SMT23	23	○ PNT01	27			
○ S177	16	○ S213	14	NEW ● S246	15			NEW ○ SMT24	22	○ PNT02	27			

03 NATURAL SURFACE VM, UMI, RM, NF, RF, TNS, NS, APZ

VM	UMI	RM	RM	NF	TNS	APZ
NEW VM001	UMI01	RM001	RM013	NEW NF901	TNS03	APZ05
92	93	96	95	98	101	102
NEW VM002	UMI02	RM002	RM015	NEW NF902	TNS05	APZ18
92	93	96	95	98	101	102
NEW VM003	UMI05	RM003	RM051	NEW NF903	TNS07	APZ25
90	94	96	96	98	101	102
NEW VM004	UMI06	RM004			TNS10	APZ26
90	94	96			101	
NEW VM005	UMI07	RM005				
91	94	96				
NEW VM006	UMI08	RM006				
91	94	96				
NEW VM007		RM007				
92		96				
NEW VM008		RM008				
91		96				
NEW VM009		RM009				
91		96				
NEW VM010		RM011				
92		95				
NEW VM011		RM012				
90		95				

RF	NS
RF001	NS601
100	96
RF008	NS602
100	96
RF010	NS809
100	102
RF011	NS820
100	102
	NS821
	102

02 WOOD LW, SPW, ZX, W

LW		SPW			ZX			W					
NEW LW101	33	NEW SPW29	45	SPW69	59	ZX101	73	ZX144	73	W011	81	W632	84
NEW LW102	32	NEW SPW30	45	SPW70	56	ZX102	75	ZX145	75	W012	81	W638	86
NEW LW103	34	NEW SPW40	49	SPW71	56	ZX103	73	ZX149	76	W134	83	W681	86
NEW LW104	37	SPW41	72	SPW72	68	ZX104	77	ZX150	75	W141	85	W705	86
NEW LW105	36	SPW42	72	SPW73	68	ZX105	76	ZX151	79	W171	85	W722	86
NEW LW106	38	SPW43	54	SPW90	55	ZX107	76	ZX152	75	W177	85	W727	86
		SPW44	54	SPW91	60	ZX108	76	ZX153	73	W183	85	W816	86
		SPW45	51	SPW92	60	ZX109	77	ZX154	78	W189	81	W823	86
		SPW46	51	SPW93	65	ZX110	76	ZX155	73	W192	84	W842	85
		SPW47	71	SPW94	65	ZX111	76	ZX156	76	W196	81	W845	85
		SPW48	71	SPW95	66	ZX113	75	ZX157	80	W198	81	W863	81
		SPW49	67	SPW96	66	ZX114	76	ZX158	78	W200	82	W864	83
		SPW50	67	SPW97	55	ZX116	79	ZX159	74	W206	86	W867	85
		SPW51	69	SPW98	53	ZX117	77	ZX161	73	W207	86	W870	83
		SPW52	69	SPW99	53	ZX118	79	ZX162	73	W260	86	W871	84
		NEW SPW53	46			ZX119	77	ZX163	73	W301	82	W874	83
		NEW SPW54	47			ZX123	77	ZX164	77	W302	86	W877	82
		NEW SPW55	47			ZX124	78	ZX165	74	W351	81	W878	82
		NEW SPW56	48			ZX125	80	ZX166	74	W357	84	W879	82
		NEW SPW57	48			ZX126	79	ZX169	78	W375	84	W880	85
		NEW SPW58	43			ZX129	79	ZX170	74	W376	86	W881	83
		NEW SPW59	43			ZX130	77	NEW ZX171	73	W388	84	W933	81
		SPW61	57			ZX131	76	NEW ZX172	75	W389	81	W935	81
		SPW62	57			ZX132	78	NEW ZX173	78	W390	83	W937	81
		SPW63	50			ZX133	80	NEW ZX174	80	W401	82	W942	85
NEW SPW24	44	SPW64	50			ZX134	80	NEW ZX175	79	W504	83	W943	84
NEW SPW25	44	SPW65	50			ZX137	76	NEW ZX176	74	W508	85	W946	81
NEW SPW26	40	SPW66	61			ZX140	77	NEW ZX177	75	W528	84	W949	85
NEW SPW27	40	SPW67	61			ZX141	80	NEW ZX178	74	W531	83		
NEW SPW28	40	SPW68	59			ZX142	73			W538	85		

04 STONE & MARBLE PM, NS

PM		NS									
PM003	107	PM011	112	NS118	120	NS402	121	NEW NS715	120	NEW NS822	115
PM004	109	PM012	112	NS119	119	NS403	121	NEW NS716	116	NEW NS823	115
PM006	108	PM014	113	NS120	119	NS703	121	NEW NS717	116	NS898	118
PM007	108	PM016	110	NS121	119	NS705	121	NS804	120	NS899	118
PM008	109	PM017	111	NEW NS122	114	NS708	120	NS806	119		
PM009	106	NEW PM019	105	NEW NS123	114	NS710	118	NS814	117		
PM010	106			NS401	121	NS711	118	NS815	117		

www.bodaq.com



**Bodaq interior
film digital
catalog**

Scan the QR code to experience Bodaq interior film online.

LIVING & CULTURE

Start the most modern
interior where life becomes
culture at Hyundai L&C.



L & C

HYUNDAI L&C 2024 - 2025

INTERIOR FILM NEW COLLECTION

Creative and Environmental
Interior Solution Provider

CONTENTS

01 BASIC ————— 12

- Solid
- Premium Painted Concrete
- Super Matte
- Painted Wood
- Premium Painted Wood
- Texture

02 WOOD ————— 29

- Long Wood
- Origin Wood
- Premium Wood
- Standard Wood

03 NATURAL SURFACE ————— 87

- Velvet Metal
- UMI
- Real Metal
- Natural Fabric
- Real Fabric
- Deep Emboss
- Fabric & Gold

04 STONE & MARBLE ————— 103

- Premium Marble
- Stone & Marble

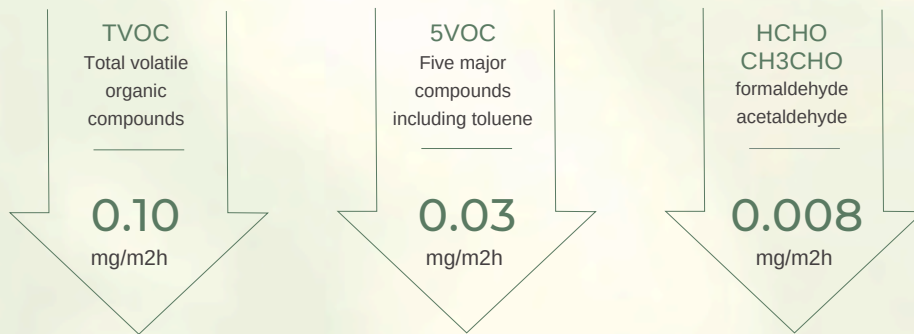
CERTIFICATION



TOP GRADE

It has achieved the highest level of HB Mark.
We are the healthiest choice in the industry..

No more worrying about the adhesive smell right after installation! By applying water-based primer, we manage it more thoroughly.



Interior films widely used in general homes are required by the Ministry of Environment.

(Applicable to multi-use facilities such as apartments)

Hyundai L&C interior film Bodaq not only has an interior mark, but also indoor mark

Bodaq is the choice for a healthier space

Environment

We care about the environment.



- It is safe as no heavy metals (lead, cadmium, mercury, hexavalent chromium, etc.) harmful to the human body are detected.
- Formaldehyde (HCHO), a substance that causes sick building syndrome, is not released.
- Volatile organic compounds (TVOC, toluene, etc.) that are harmful to the environment by generating odor or ozone have been minimized.
- Meets autonomous safety standards (KC mark standards) applied to wallpaper and paperboard.
- Meets the safety requirements for hazardous chemicals in the common safety standards for children's products.
- Excellent antibacterial and anti-fungal properties help maintain a comfortable surrounding environment.

heavy metal [Pb, Cd, Hg, CrVI]		formaldehyde [HCHO]		Phthalates [Phthalate]		
standard		standard		standard		
Pb	5mg/kg	0.12mg/m ³ h	Not detected	DEHP	0.1% or less	
Cd	0.5mg/kg			Not detected	DBP	0.1% or less
Hg	2mg/kg				BBP	0.1% or less
CrVI	1mg/kg					

Common safety standards for children's products Elution standards for hazardous chemicals

Hazardous Substances [Sb, As, Ba, Cd, Cr, Pb, Hg, Se]			
standard			
Sb	60mg/kg	Cr	60mg/kg
As	25mg/kg	Pb	90mg/kg
Ba	1000mg/kg	Hg	60mg/kg
Cd	75mg/kg	Se	500mg/kg

satisfy

Safety

We think about safety.



소방산업기술원

Flame retardant performance [Fire Industry Technology Institute Certification]					Staining resistance					
Carbonization length: 20cm or less	Carbonization area: 30cm ² or less	Afterflame time: 3 seconds or less	Remaining time less than 5 seconds	Smoke density: 200 Ds						
Flame retardant certification					No change					

※ You can obtain the report, construction designation form, and construction manual for our products by contacting our head office or agency.

24-25 Trend Summary

Interior design trends suggested by Hyundai L&C

The theme of Hyundai L&C's 24-25 Interior Design Trend Seminar is 'HYPECORE', which sets a specific world view and is deeply immersed in it for one's own pleasant satisfaction even in the era of uncertainty called the economic crisis. We look at the redefined priorities of consumers and propose designs that provide satisfaction from a long-term perspective. We look at the lifestyles of consumers who are trying to balance financial challenges and their tastes, and see which trends we should focus more on.

Nature Scape



Scenery that permeates daily life

Social Flow

Awe Awe towards Mother Nature
 Calm Tech Quiet technology for user convenience
 Sleep Wellness Growth of sleep industry for health

Design Style

Scenography Architecture utilizing the surrounding terrain
 Calming Dark Calming through darkness
 Museumification A museum-like space like a gallery

Moonlight	S240
Mocha Meringue	S246
Summer Fig	S252
Hot Fudge	S253
Meteorite	PNC54

Color

A neutral, calm warm gray color and a dark brown and gray palette reminiscent of a majestic canyon or stone.

Material

A finish with an intense curve resembling a layered cross-section of bold stones or rocks that draws in the majesty and scale of nature.

Mini-fullness



The sense of fulfillment that small changes bring

Social Flow

Recession Core
 Multiplex Space Space preference for multi-generations
 Long-term Investment
 Expansion of investment in eco-friendly solutions that help reduce living costs

Design Style

Social Village Social village space for multiple generations
 New Brutalism Soft and modern New Brutalism
 Longevity Beauty Long-lasting beauty as if it were made from nature

Barely Blue	S153
Arctic Wolf	PNC52
Sepia Rose	S207
Mercury	S248
Ice Palace	VM003

Color

A toned-down pastel color palette with warm colors added to light gray and an industrial silver point color palette.

Material

Wool and bouclé materials are used together with cold materials such as concrete and metal to create a cozy and warm mood.

Dopamine Dive



Journey to find myself

Social Flow

New Budget Travel Travel on a budget
 Hyper Personalization The era of hyper-personalization
 A.I. Revolution Digital world through artificial intelligence revolution

Design Style

Travel Aesthetic A visual space that reveals a travel aesthetic
 Mise-en-Scene Visual space with unique concepts
 Deja vu A familiar yet new space created by incorporating A.I.

Canary Green	SMT20
Samoan Sun	S146
Innuendo	S250
Spumante	VM008
Dress Blues	S254

Color

Digital color palette such as pastel pink and pale green combined with retro colors of mustard, deep navy, and deep green.

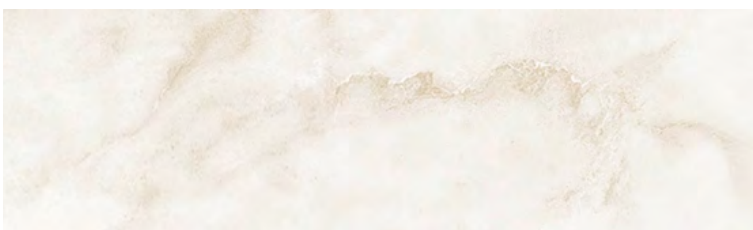
Material

A pattern with a classic transparent stone, irregular burlwood with a vintage mood, and an elaborate weave structure.

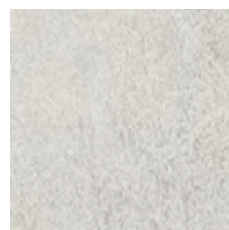
Scenery that permeates daily life

#Awe #Calm_through_darkness #Gallery

Create a retail space reminiscent of an inspiring gallery as if nature has been brought indoors with PNC53, a neutral color and calm paint texture, NS717, a dark gray particle stone that gives a sense of weight, and PM019, a white marble with a soft touch.



PM019



PNC53



NS717

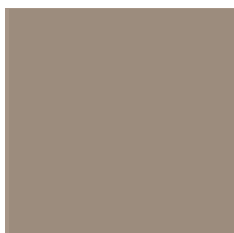
※ The above image is for illustrative purposes only and may differ from the actual product.

Intrend Design Proposal

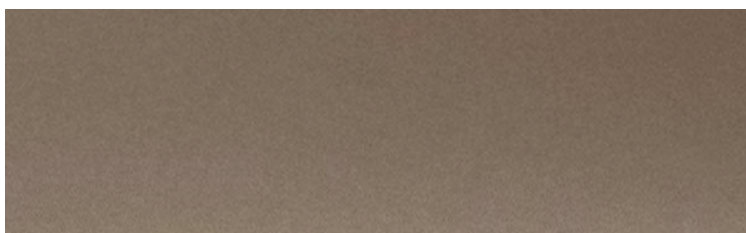
The sense of fulfillment that small changes bring

#Long-lasting_beauty #New_brutalism #Toned_down_pastel

Create a softer, more modern brutalist mood with a tone-on-tone interior using S246 in a toned-down soft camel color and velvet metal VM008 in a light brown color with a subtle glow.



S246



VM008

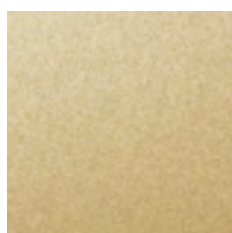
Journey to find myself

#Travel_Aesthetics #Classic_and_Sophisticated #Familiar_yet_New

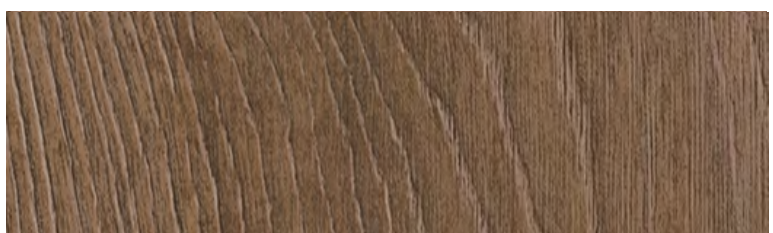
Create a classic vintage mood with the gold-colored velvet metal VM007 and deep navy-colored S254, and use the LW105 with its attractive cool wood grain to create a retro analog space reminiscent of train travel.



S254



VM007



LW105

Bodaq interior film digital catalog

Scan the QR code at www.bodaq.com to view Bodaq interior films online.



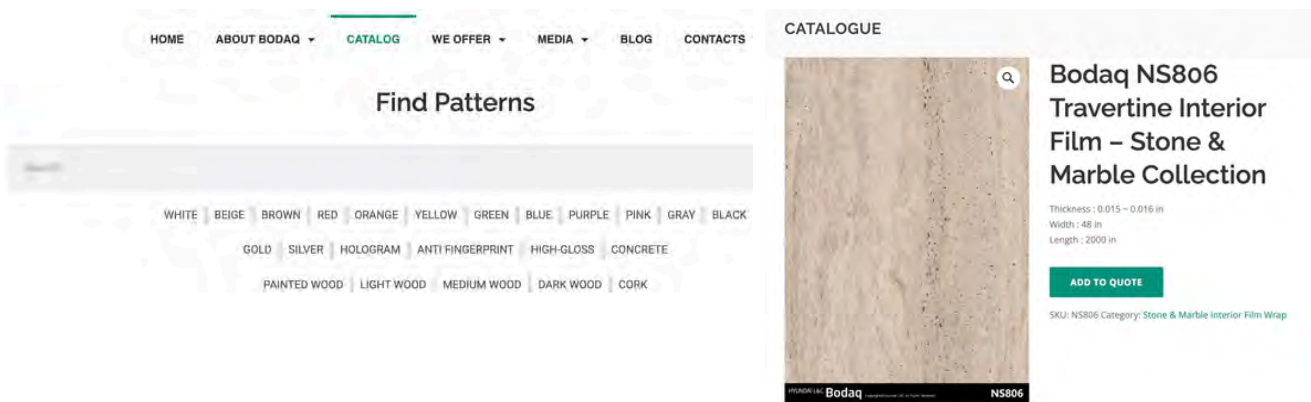
Simulation

You can simulate Bodaq interior film in various residential spaces (kitchen, living room, bedroom, entrance hallway) and commercial spaces (hotel, hospital, office, store, cafe, bank, daycare).

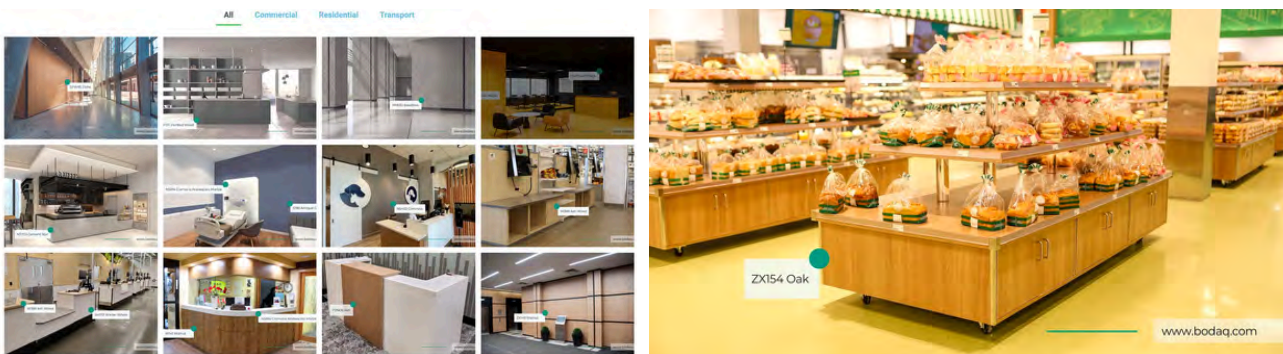




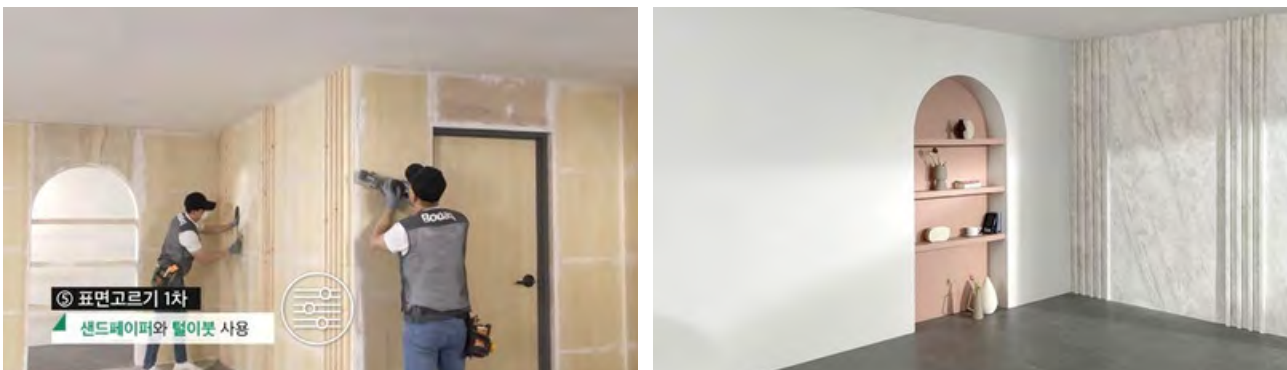
Search Pattern You can view patterns, colors, as well as full-width images for all Bodaq products (full-width images are limited to some patterns) at www.bodaq.com/catalog



Bodaq Gallery You can view various installation case images where Bodaq products were applied in the Gallery



Installation Tutorials We provide installation guide videos for our products.



01

BASIC

—
Solid
Premium Painted Concrete
Super Matt
Painted Wood
Premium Painted Wood
Texture



Unique spectrums completed with color and texture.
The space that draws attention without adding
eye-catching decorations, an interior that appears
careless but never misses even the smallest details.
With Bodaq Basic Series completed with its everchanging
combinations of trendy colors and patterns,
express your own unique sensibility.



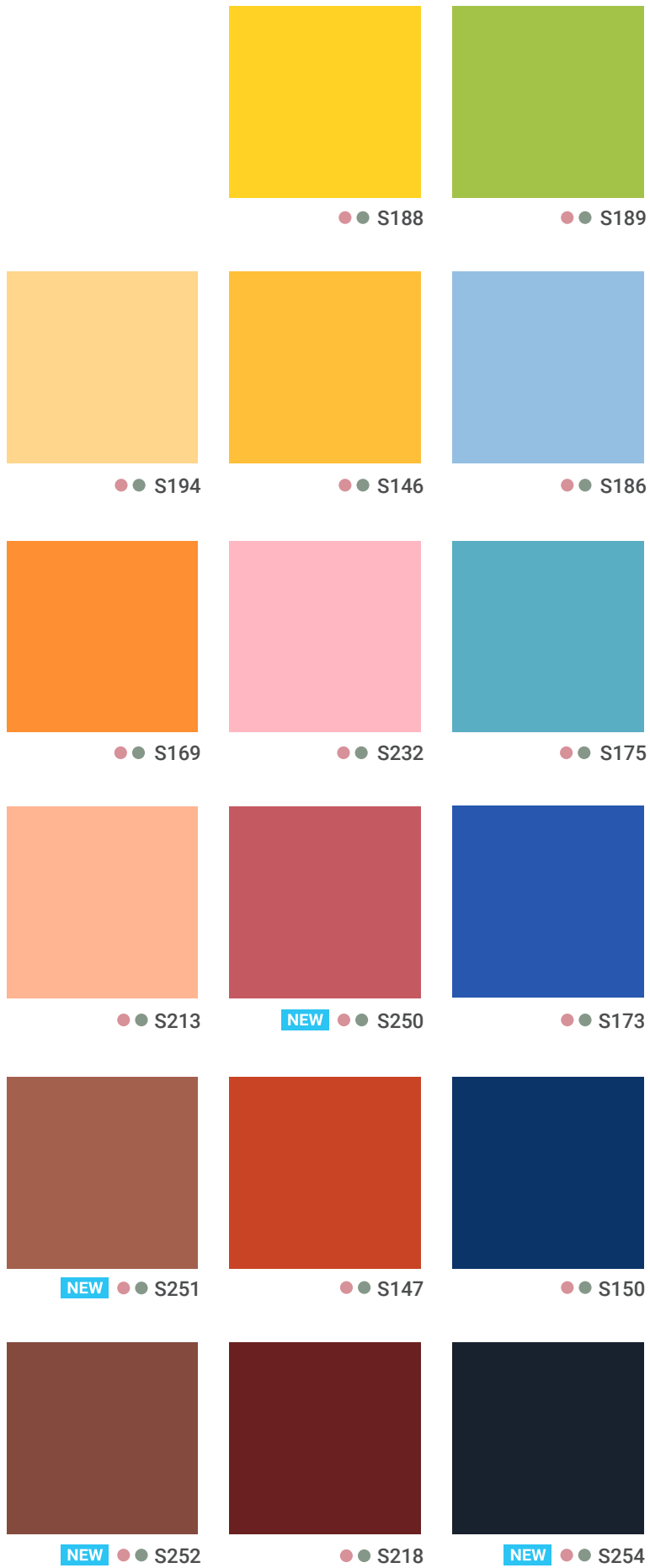
Basic.

BASIC



S238 · S252

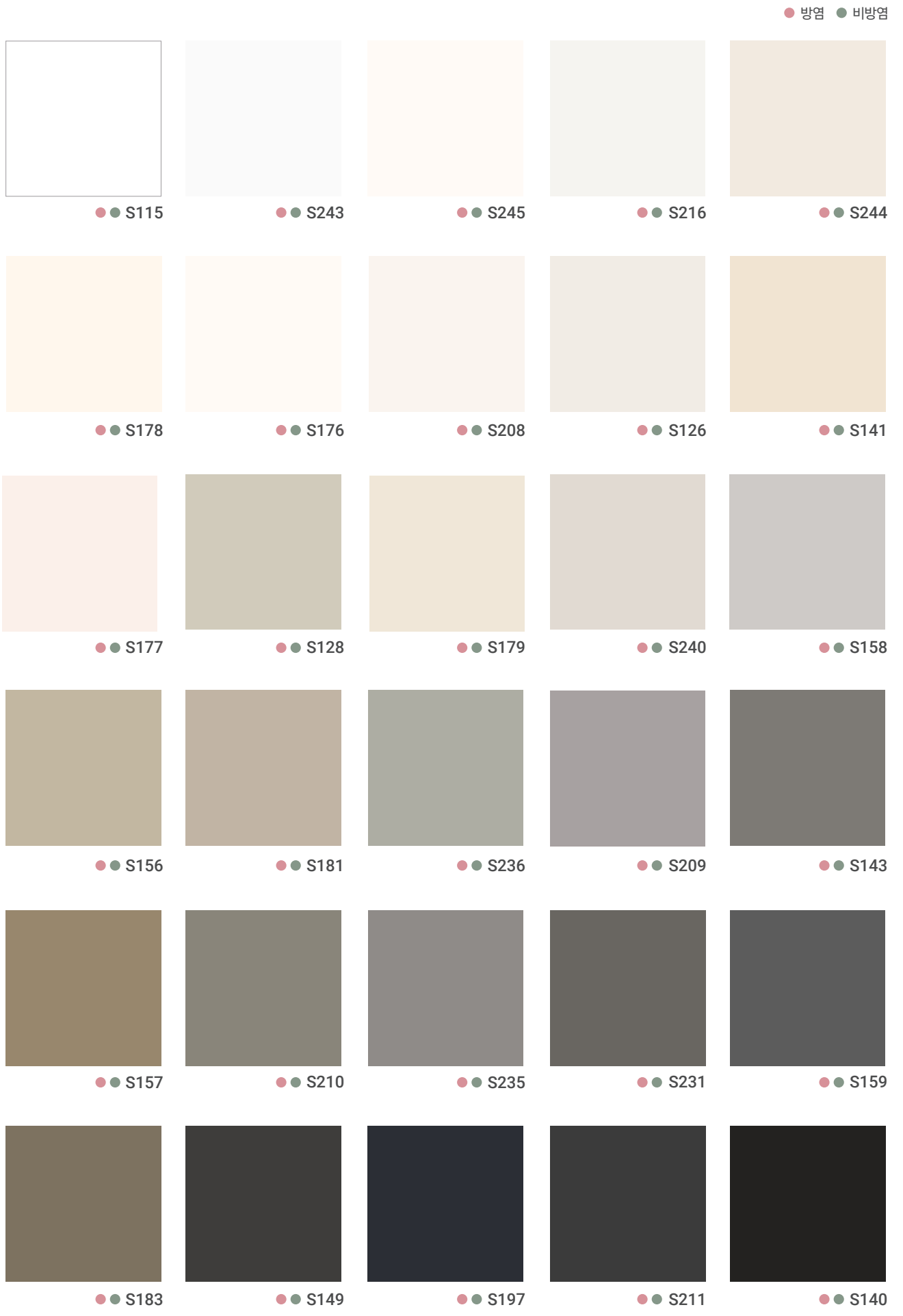
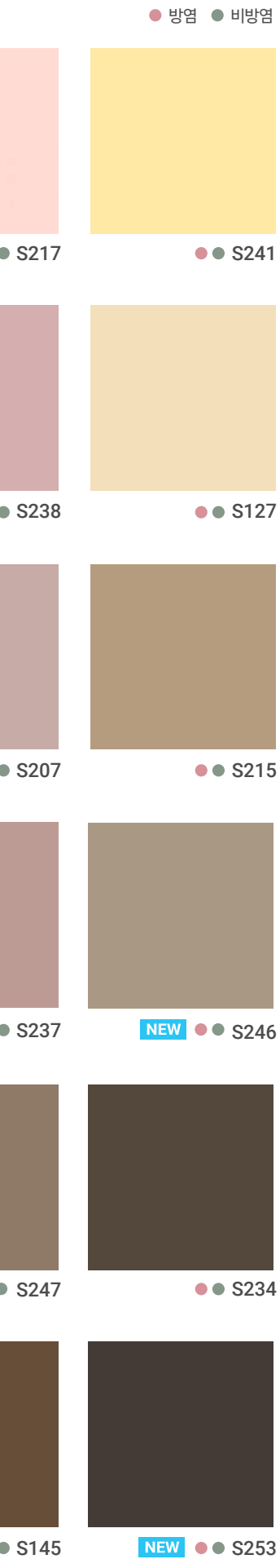
Solid



Solid



봄 햇살처럼 화사한 파스텔 톤부터 최근 주목받고 있는 트렌디 컬러까지 보다 깊이 있고 다양해진 바닥의 컬러 팔레트로 감각적인 인테리어를 완성하세요.
세상에 하나뿐인 특별한 이야기를 담은 공간이 연출됩니다.



Premium Painted Concrete



PNC52

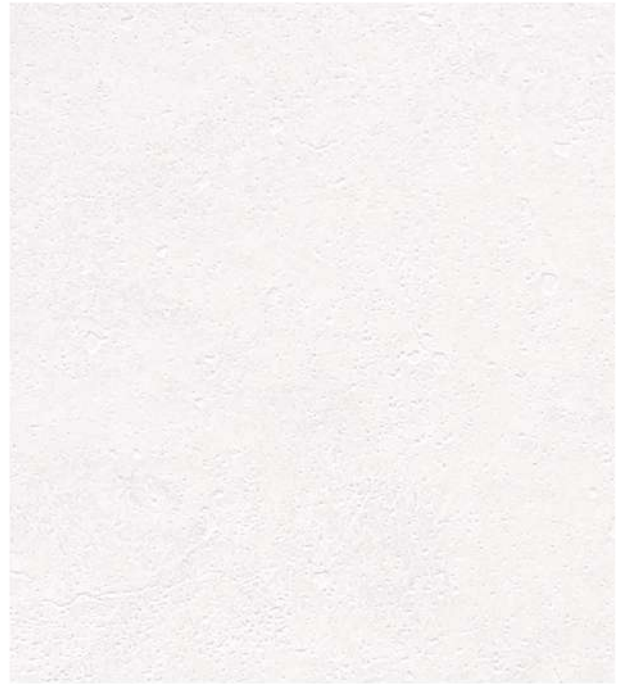
회벽을 바른 듯, 콘크리트 특유의 리얼한 질감과 부드러운 음영이 느껴지는 보닥 페인티드 콘크리트 시리즈로 정제되고 내추럴한 공간을 연출하세요.

● 방염 ● 비방염



Stucco

NEW ● ● PNC51



Moonstone

NEW ● ● PNC52



Moonstone

● ● PNC49



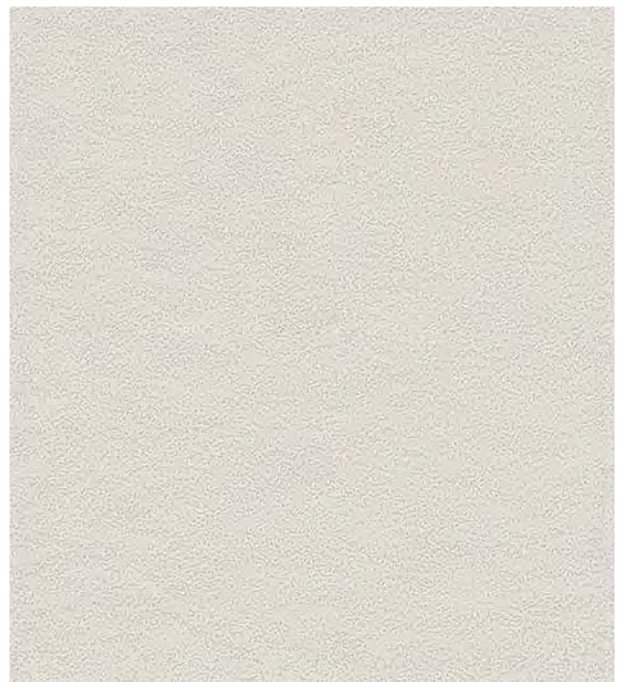
Slate

● ● PNC47



Stucco

● ● PNC44



Stone Blast

● ● PNC42

Premium Painted Concrete



PNC53



Stone Blast

NEW ● ● PNC53



Stucco

● ● PNC45



Stucco

● ● PNC46

● 방염 ● 비방염



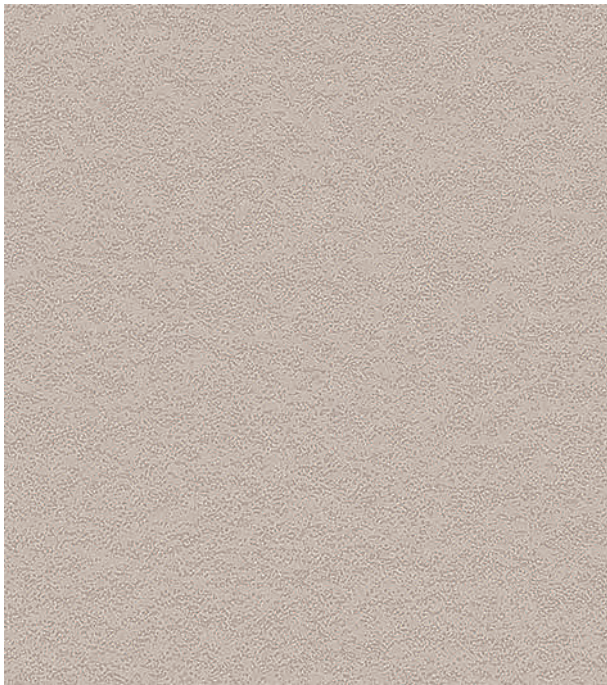
Moonstone

● ● PNC50



Stone Blast

● ● PNC41



Stone Blast

● ● PNC43



Stucco

NEW ● ● PNC54



※ 상기 이미지는 이해를 돕기 위한 것으로 실제 제품과 상이할 수 있습니다.



SMT24

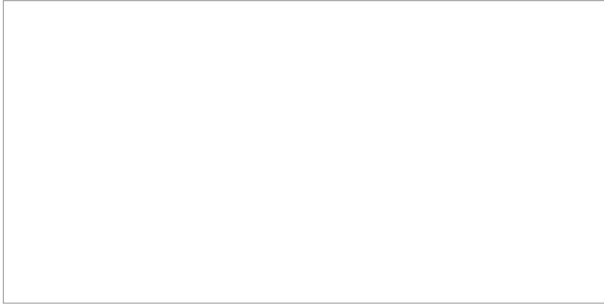
보닥 수퍼매트 시리즈는 차별화된 특수 표면 질감 처리를 하여 각종 생활 오염과 스크래치에 강한 프리미엄 제품입니다.

젠들한 시각적 효과는 물론 고급스러운 촉감으로 공간의 품격을 한 차원 높여드립니다. 해당 제품은 방염/비방염 계열 공정이 상이하여 표면질감의 차이가 있습니다. (*샘플북 수록: 비방염 기준)



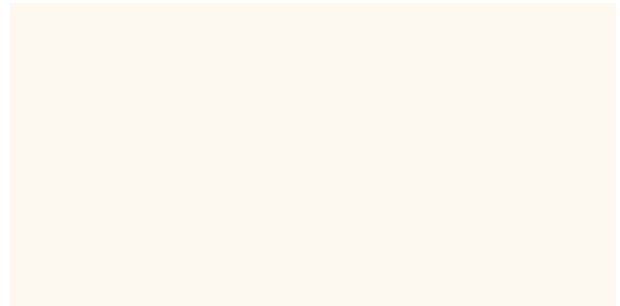
제품을 만져보세요

● 방염 ● 비방염



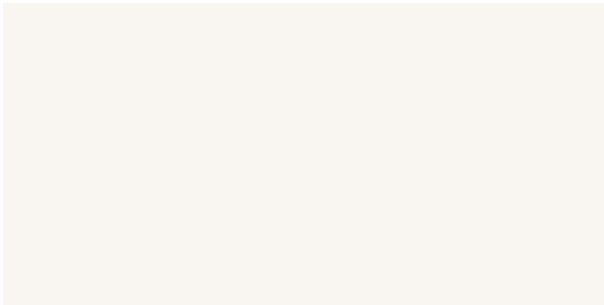
Super Matt

NEW ● ● SMT24



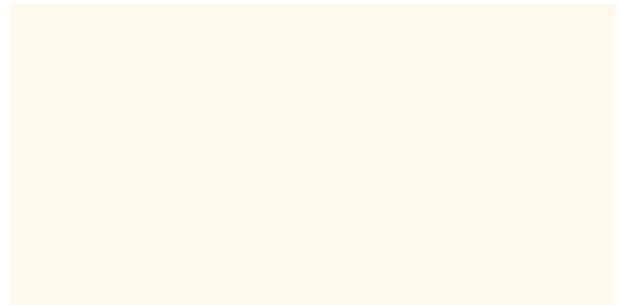
Super Matt

● ● SMT01



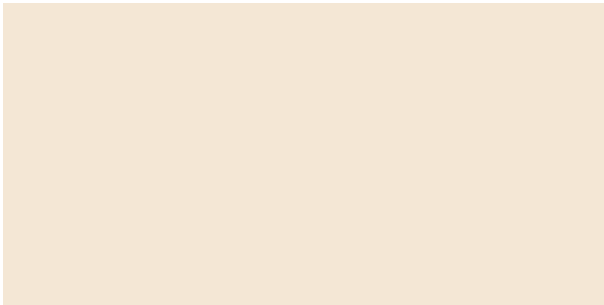
Super Matt

● ● SMT16



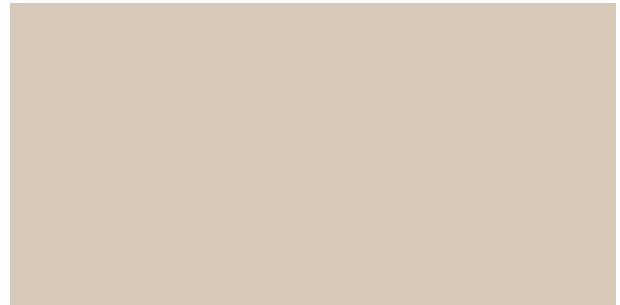
Super Matt

● ● SMT02



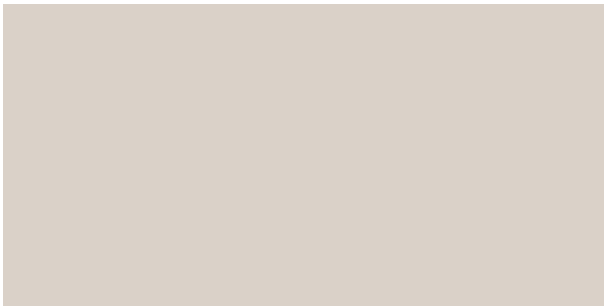
Super Matt

● ● SMT17



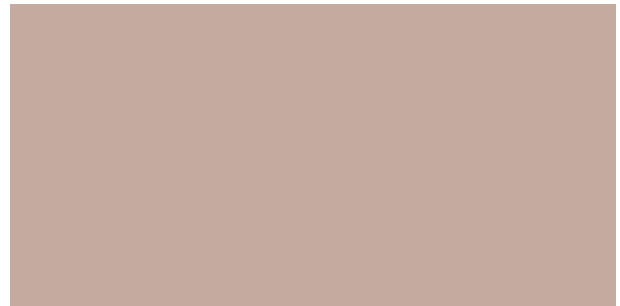
Super Matt

● ● SMT03



Super Matt

● ● SMT12



Super Matt

● ● SMT21



Super Matt

● ● SMT13



Super Matt

● ● SMT19

Super Matt



SMT18 · SMT20




Super Matt 

  SMT18



Super Matt 

  SMT20




Super Matt 

  SMT22



Super Matt 

  SMT23



Super Matt 

  SMT11



Super Matt 

  SMT10



제품을 만져보세요

● 방염 ● 비방염



Super Matt

● ● SMT04



Super Matt

● ● SMT05



Super Matt

● ● SMT14



Super Matt

● ● SMT15



SMT07



Super Matt

● ● SMT08



Super Matt

● ● SMT06



Super Matt

● ● SMT07

Painted Wood



Super White Wood ●● ZSW04



Painted Wood **NEW** ●● PTW16



Painted Wood ●● PTW01



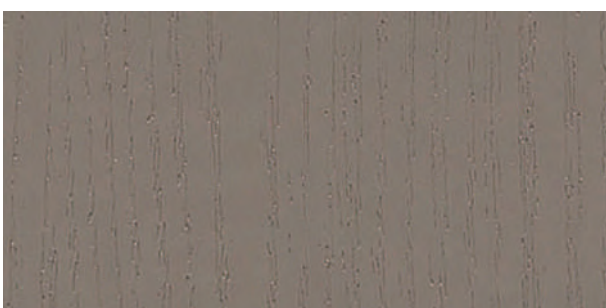
Painted Wood ●● PTW10



Painted Wood ●● PTW02



Painted Wood ●● PTW03



Painted Wood ●● PTW09



PTW10

우드 특유의 질감은 살리면서 페인트의 감성을 담아낸 페인티드 우드 시리즈의 새롭게 출시된 컬러를 만나보세요.

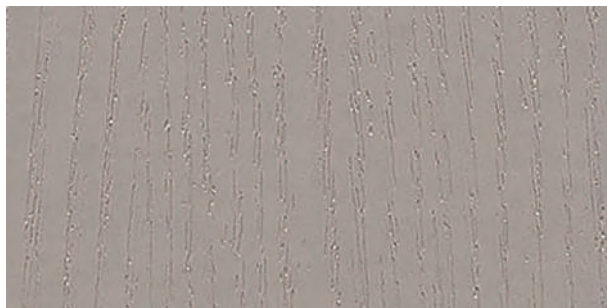
● 방염 ● 비방염



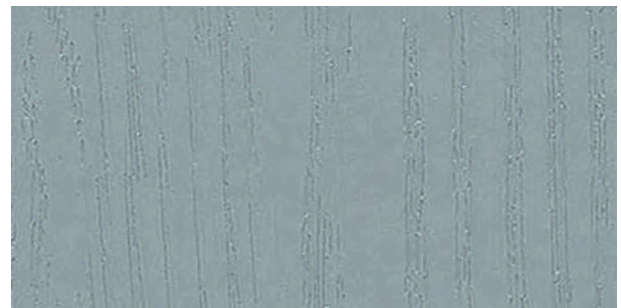
Painted Wood ● ● PTW14



Painted Wood ● ● PTW08



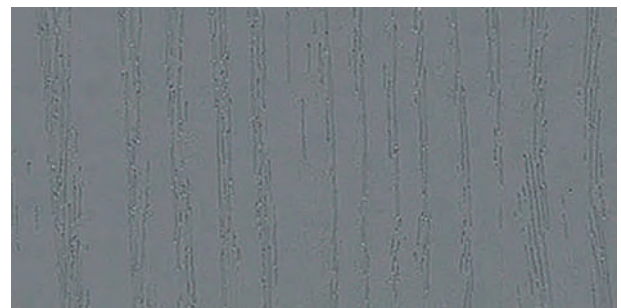
Painted Wood ● ● PTW11



Painted Wood ● ● PTW06



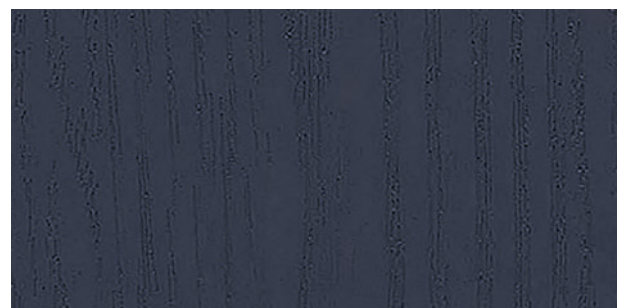
Painted Wood ● ● PTW12



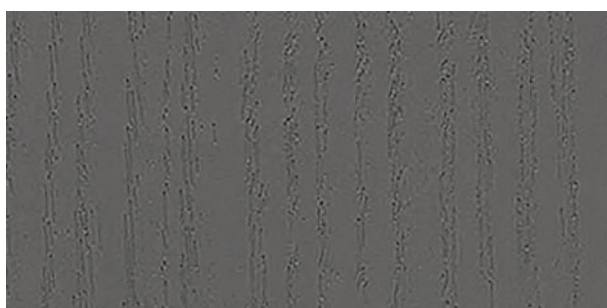
Painted Wood ● ● PTW05



Painted Wood ● ● PTW13



Painted Wood ● ● PTW07



Painted Wood ● ● PTW04



Painted Wood ● ● PTW15

Premium Painted Wood



Premium Painted Wood ●● PNT01



Premium Painted Wood ●● PNT06



Premium Painted Wood ●● PNT02



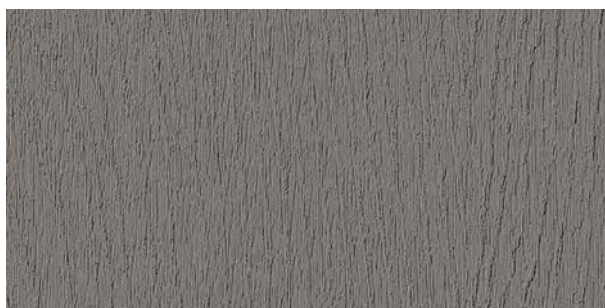
Premium Painted Wood ●● PNT03



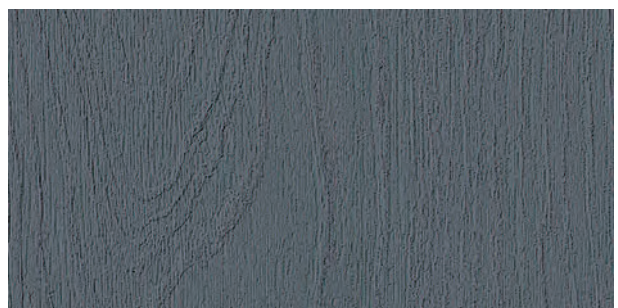
Premium Painted Wood ●● PNT04



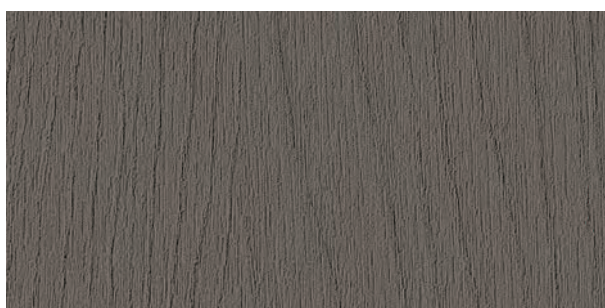
Premium Painted Wood ●● PNT07



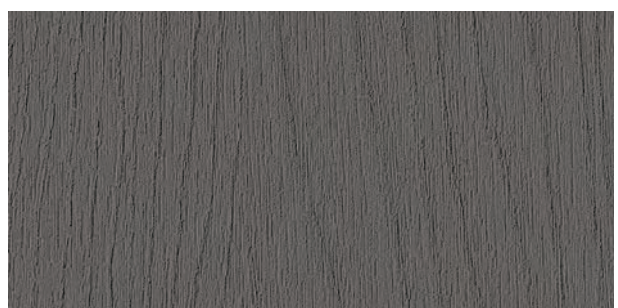
Premium Painted Wood ●● PNT08



Premium Painted Wood ●● PNT09



Premium Painted Wood ●● PNT05



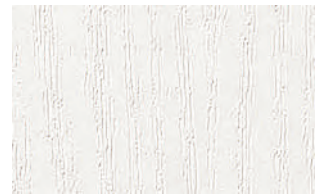
Premium Painted Wood ●● PNT10

Texture

● 방염 ● 비방염



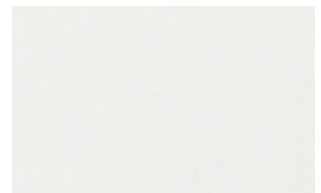
● ● LS102



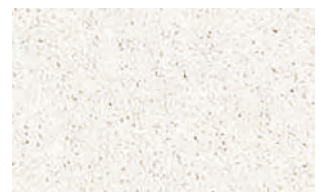
● ● LM202



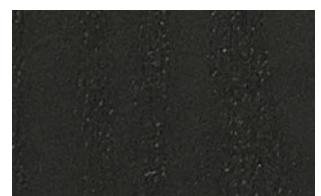
● ● LS104



● ● HS204



● ● CP202



● ● LS106



● ● LS103



HS204



02

WOOD

—

- Long Wood
- Origin Wood
- Premium Wood
- Standard Wood

Variety of changes made with wood full of sensibility.
Wood which never goes out of style is an
element that matches every space.
It is the most fundamental yet the most wide-ranged item.
We invite you to the world of wood which always presents a new
interpretation of the familiar grain, color and texture.
A majestic wood now decorates your space.





LW102

세로 폭을 더욱 길게 구현하여 반복이 적은 보닥 롱우드로 보다 높은 층고의 공간에 자연스럽게 웅장한 무드를 연출하세요.

● 방염 ● 비방염 ||| Vertical 🌲 Wood grain



Denver Oak

NEW ● ● LW102 🌲



Denver Oak

NEW ● LW101



Denver Oak



LW105

※상기 이미지는 이해를 돕기 위한 것으로 실제 제품과 상이할 수 있습니다.



Sonoma Oak

Long Wood



Sonoma Oak

NEW ● ● LW104 



Sonoma Oak



SPW27

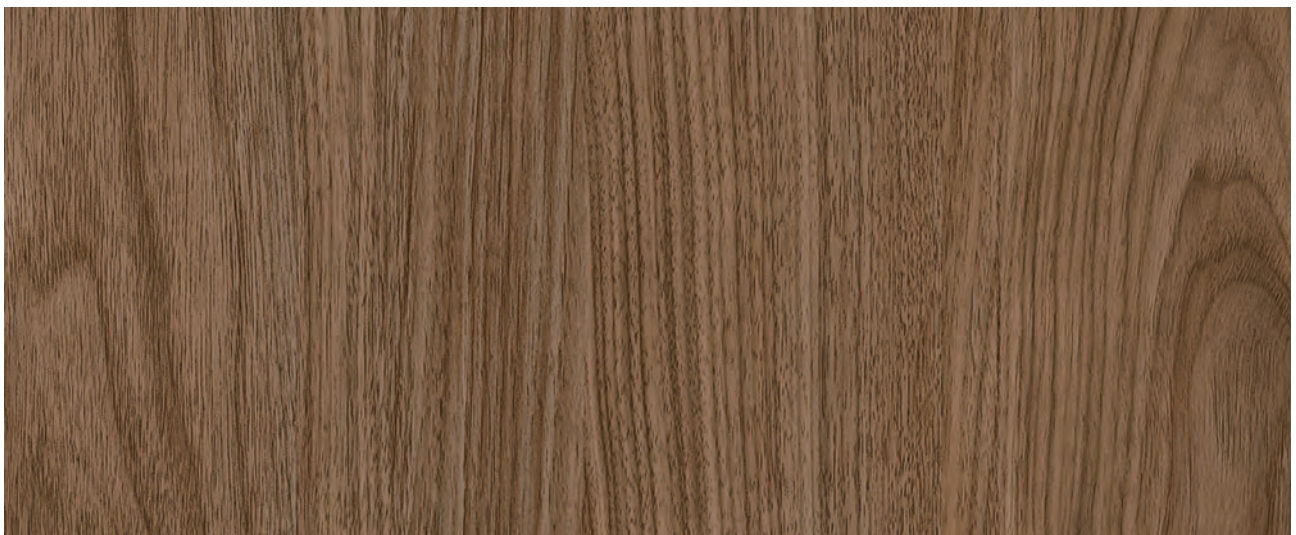
보닥만의 기술력과 프리미엄 디자인으로 완벽하게 재현해 낸 우드 그 이상의 우드, SPW 시리즈를 선보입니다.
진짜 나무에 가까운 견고한 질감과 자연스러운 느낌 그대로, 프리미엄 마감의 새로운 차원을 경험해 보세요!

● 방염 ● 비방염 ||| Vertical 🌲 Wood grain



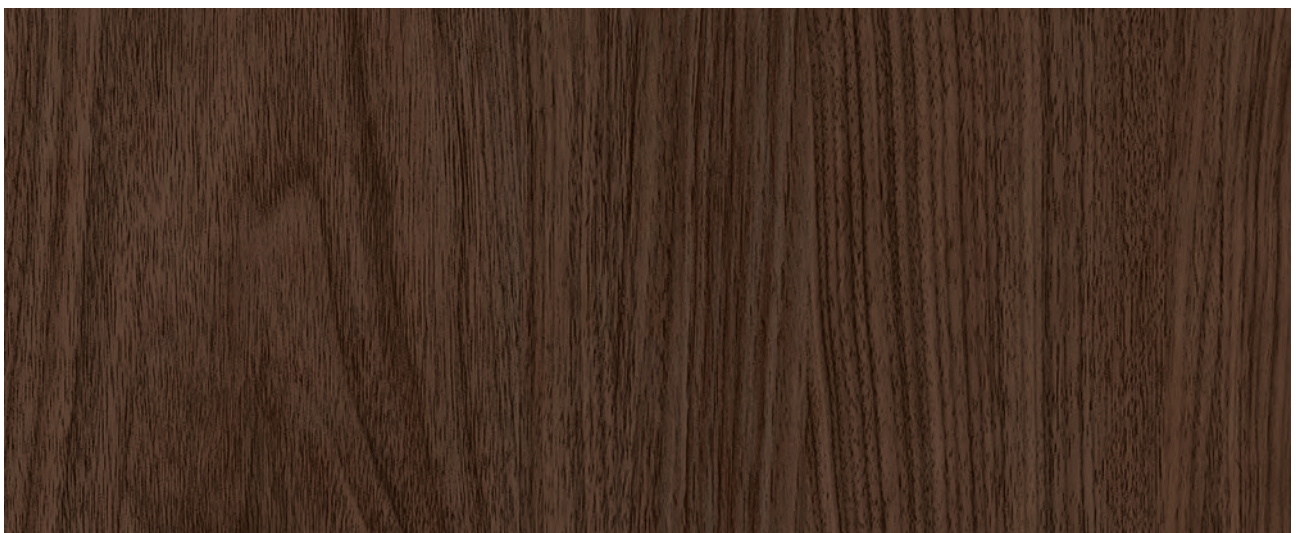
Walnut

NEW ● ● SPW26 🌲



Walnut

NEW ● ● SPW27 🌲



Walnut

NEW ● ● SPW28 🌲

Origin Wood



Oak

NEW ● ● SPW03 🔊



Oak

NEW ● ● SPW04 🔊



SPW03

● 방염 ● 비방염 ||| Vertical 🌲 Wood grain



SPW01



Wild Oak

NEW ● ● SPW01 🌲



Wild Oak

NEW ● ● SPW02 🌲

※ 상기 이미지는 이해를 돕기 위한 것으로 실제 제품과 상이할 수 있습니다.

Origin Wood



Ash

NEW ● ● SPW58 🔊



Ash

NEW ● ● SPW59 🔊



SPW59

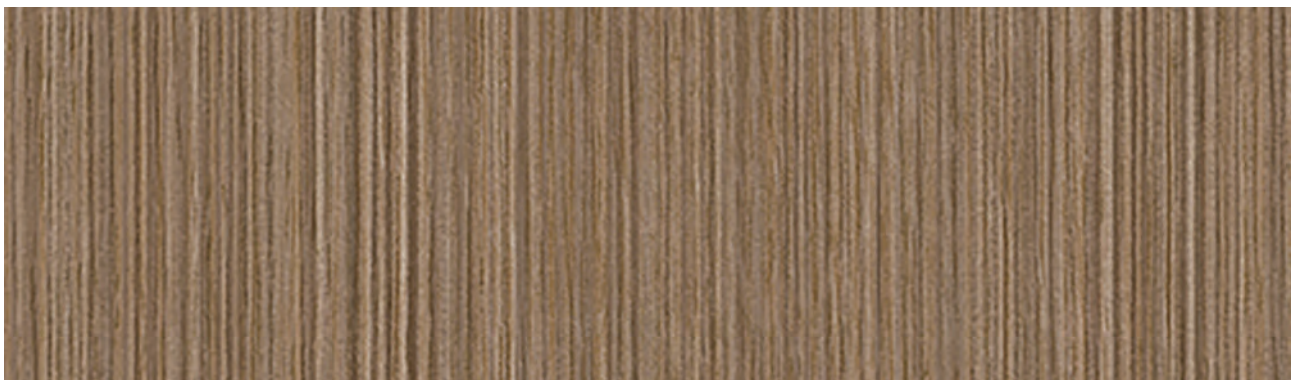


SPW25



Stripe Wood

NEW ● ● SPW24 |||



Stripe Wood

NEW ● ● SPW25 |||

Origin Wood



Oak

NEW ● ● SPW29 



Oak

NEW ● ● SPW30 



SPW29

● 방염 ● 비방염 ||| Vertical 🌲 Wood grain



Vertical Wood

NEW ● ● SPW05 |||



Oak

NEW ● ● SPW53 🌲

※ 상기 이미지는 이해를 돕기 위한 것으로 실제 제품과 상이할 수 있습니다.

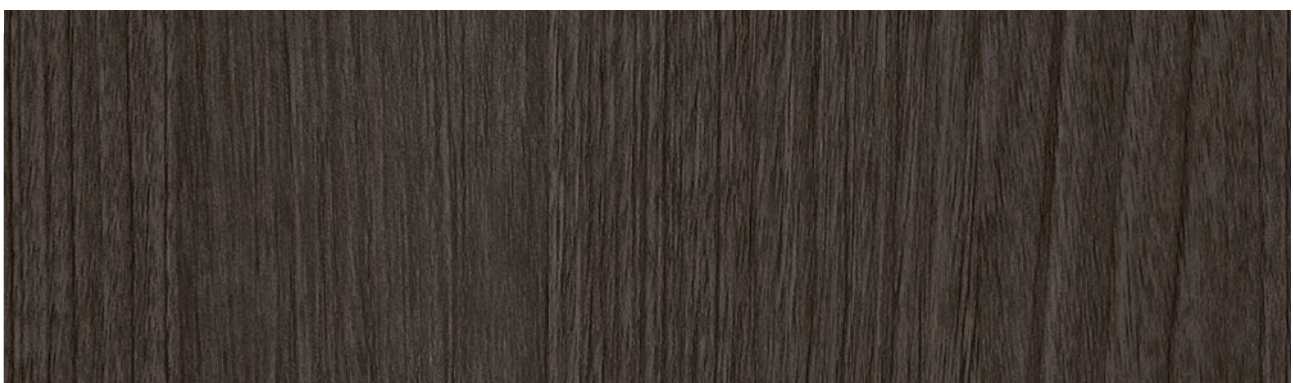


SPW54



Elder

NEW ● ● SPW54 |||



Elder

NEW ● ● SPW55 |||

● 방염 ● 비방염 ||| Vertical 🌲 Wood grain



Ash

NEW ● ● SPW56 🌲



Ash

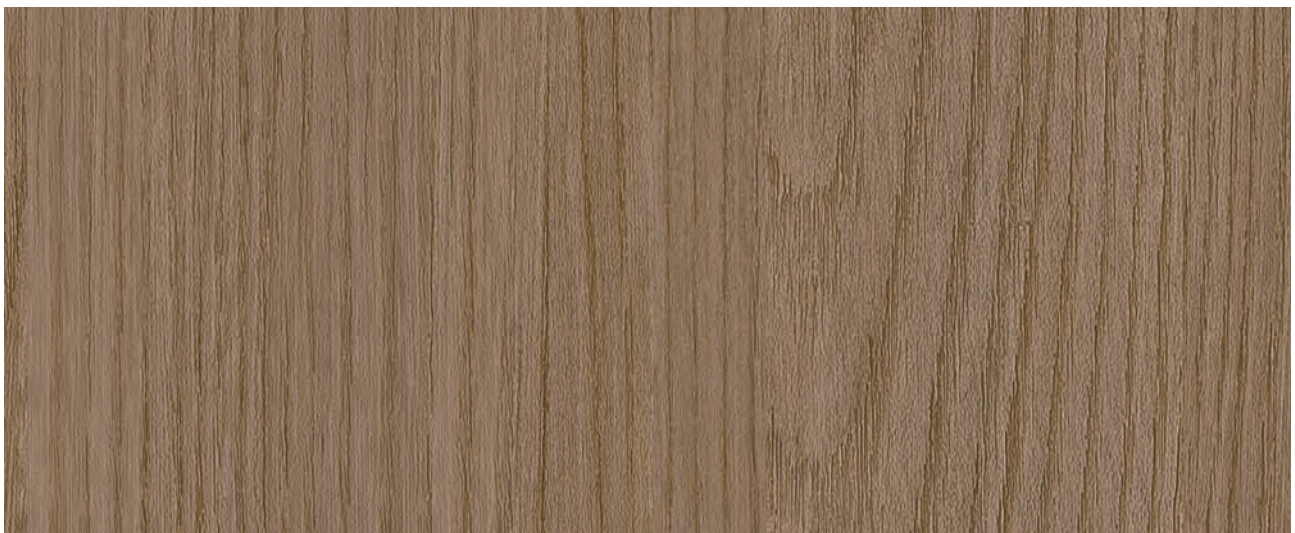
NEW ● ● SPW57 🌲



※ 상기 이미지는 이해를 돕기 위한 것으로 실제 제품과 상이할 수 있습니다.



SPW40



Elm

NEW ● ● SPW40 

● 방염 ● 비방염 ||| Vertical 🌲 Wood grain



Oak

● ● SPW63 |||



Oak

● ● SPW64 |||



Oak

● ● SPW65 |||



※상기 이미지는 이해를 돕기 위한 것으로 실제 제품과 상이할 수 있습니다.

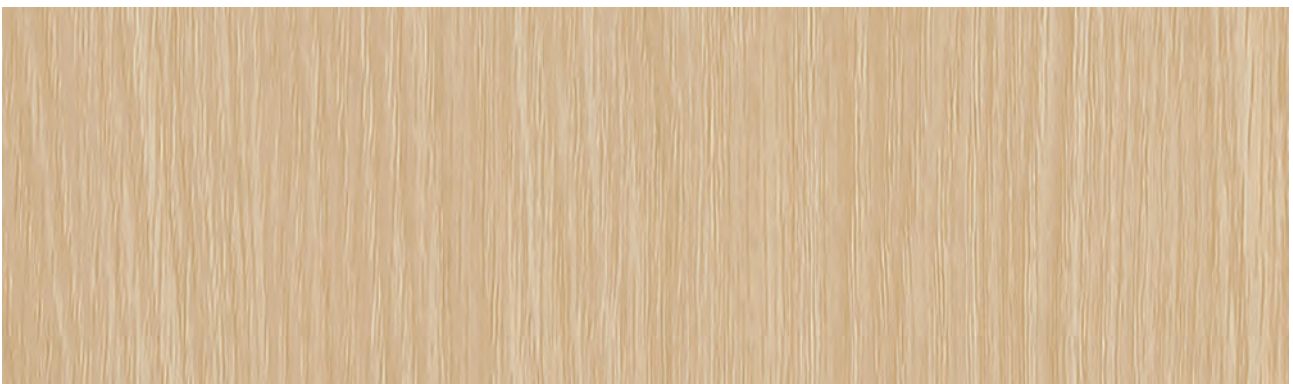
SPW64

Origin Wood



Oak

● ● SPW45 



Oak

● ● SPW46 



SPW45

● 방염 ● 비방염 ||| Vertical 🌲 Wood grain



SPW22



Solid Oak

● ● SPW22 🌲



Solid Oak

● ● SPW23 🌲

※ 상기 이미지는 이해를 돕기 위한 것으로 실제 제품과 상이할 수 있습니다.

Origin Wood



Oak

● ● SPW98 



Oak

● ● SPW99 



SPW98 · PNT07

● 방염 ● 비방염 ||| Vertical 🌲 Wood grain



SPW44



Oak

● ● SPW43 🌲



Oak

● ● SPW44 🌲

※ 상기 이미지는 이해를 돕기 위한 것으로 실제 제품과 상이할 수 있습니다.

Origin Wood



African Teak

● ● SPW90 |||



African Teak

● ● SPW97 |||



SPW90

● 방염 ● 비방염 ||| Vertical 🌲 Wood grain



Eucalyptus

● ● SPW71 🌲



Eucalyptus

● ● SPW70 🌲

※ 상기 이미지는 이해를 돕기 위한 것으로 실제 제품과 상이할 수 있습니다.

Origin Wood



Wash Oak

● ● SPW61 



Wash Oak

● ● SPW62 



SPW61

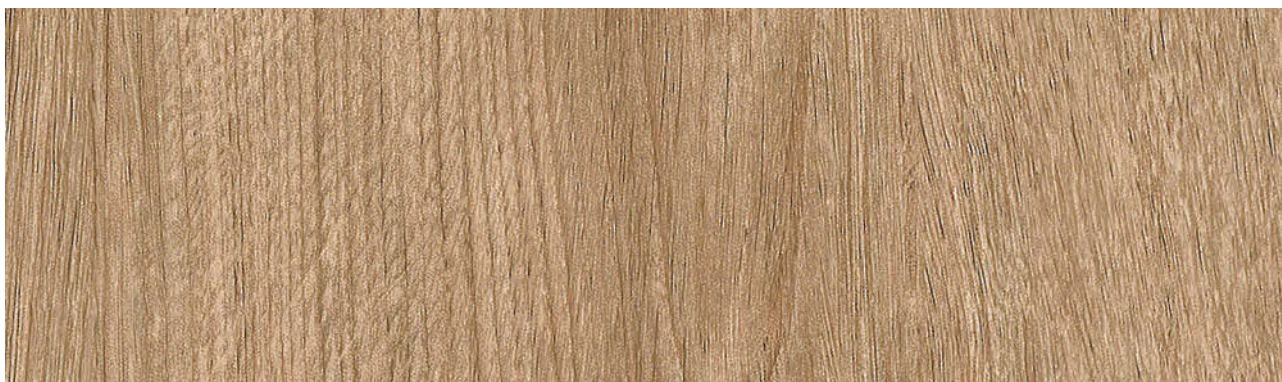


SPW15



Velvet Oak

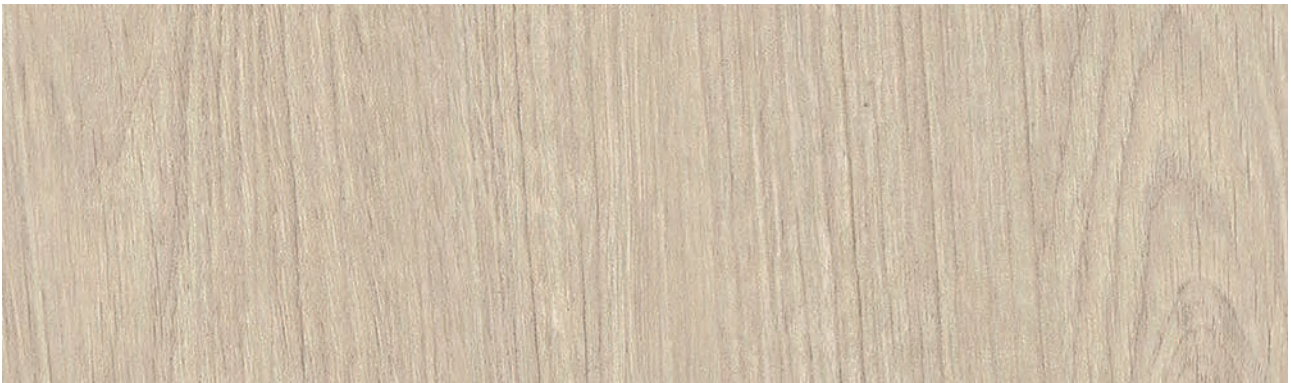
● ● SPW15 🌲



Velvet Oak

● ● SPW16 🌲

Origin Wood



Oak

● ● SPW68 



Oak

● ● SPW69 



SPW68



SPW91 · SPW92



Oak

● ● SPW91 🌲



Oak

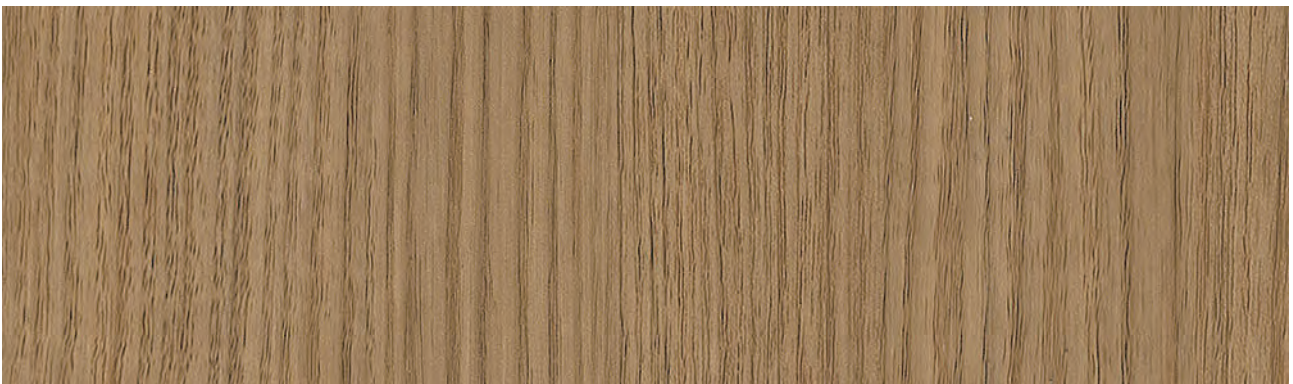
● ● SPW92 🌲

Origin Wood



Elm

● ● SPW66 |||



Elm

● ● SPW67 |||



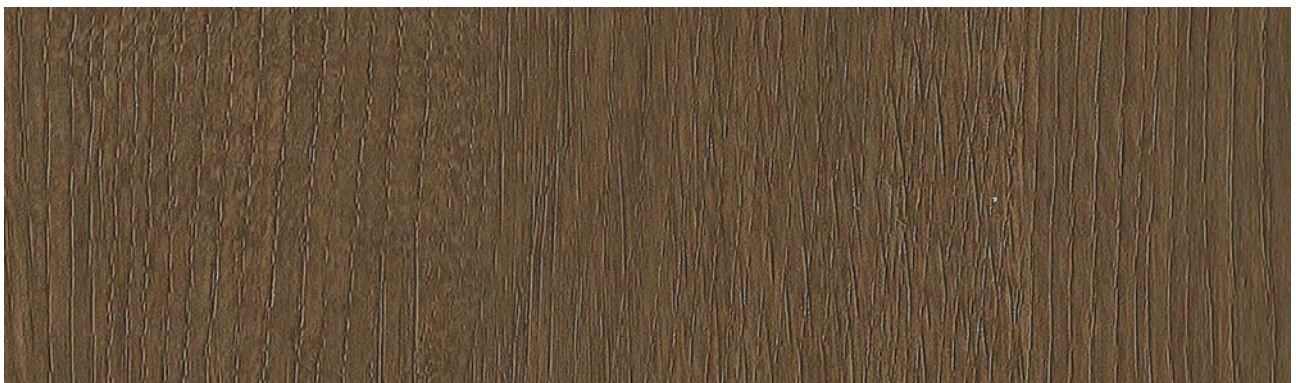
SPW67

● 방염 ● 비방염 ||| Vertical 🌲 Wood grain



Oak

● ● SPW13 🌲



Oak

● ● SPW14 🌲

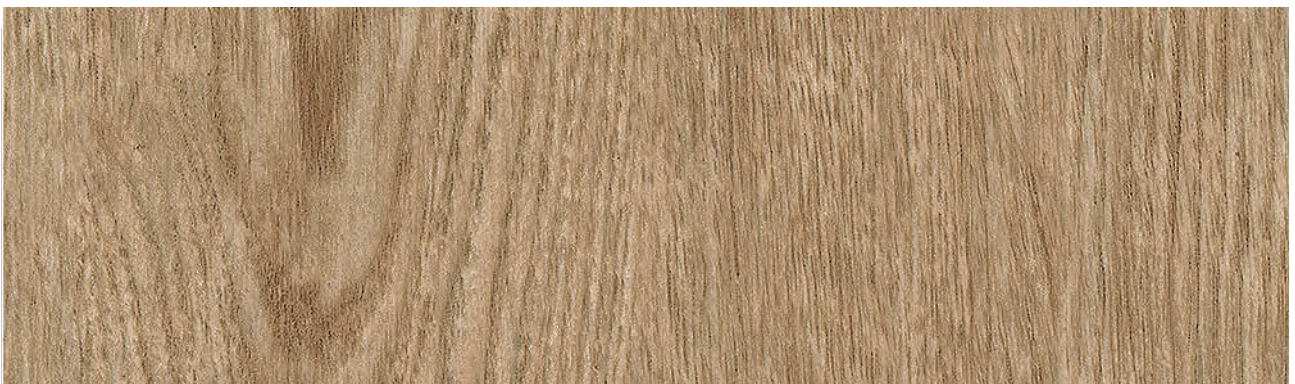
※ 상기 이미지는 이해를 돕기 위한 것으로 실제 제품과 상이할 수 있습니다.

Origin Wood



Wild Oak

● ● SPW17 



Wild Oak

● ● SPW18 



SPW17

● 방염 ● 비방염 ||| Vertical 🌲 Wood grain

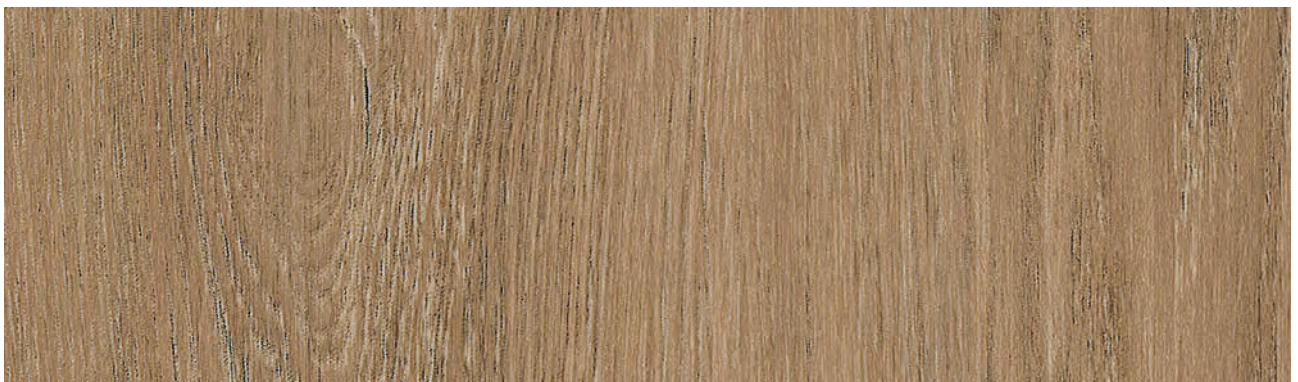


SPW12



White Oak

● ● SPW11 🌲



White Oak

● ● SPW12 🌲

※ 상기 이미지는 이해를 돕기 위한 것으로 실제 제품과 상이할 수 있습니다.

Origin Wood



Soft White Oak

● ● SPW93 



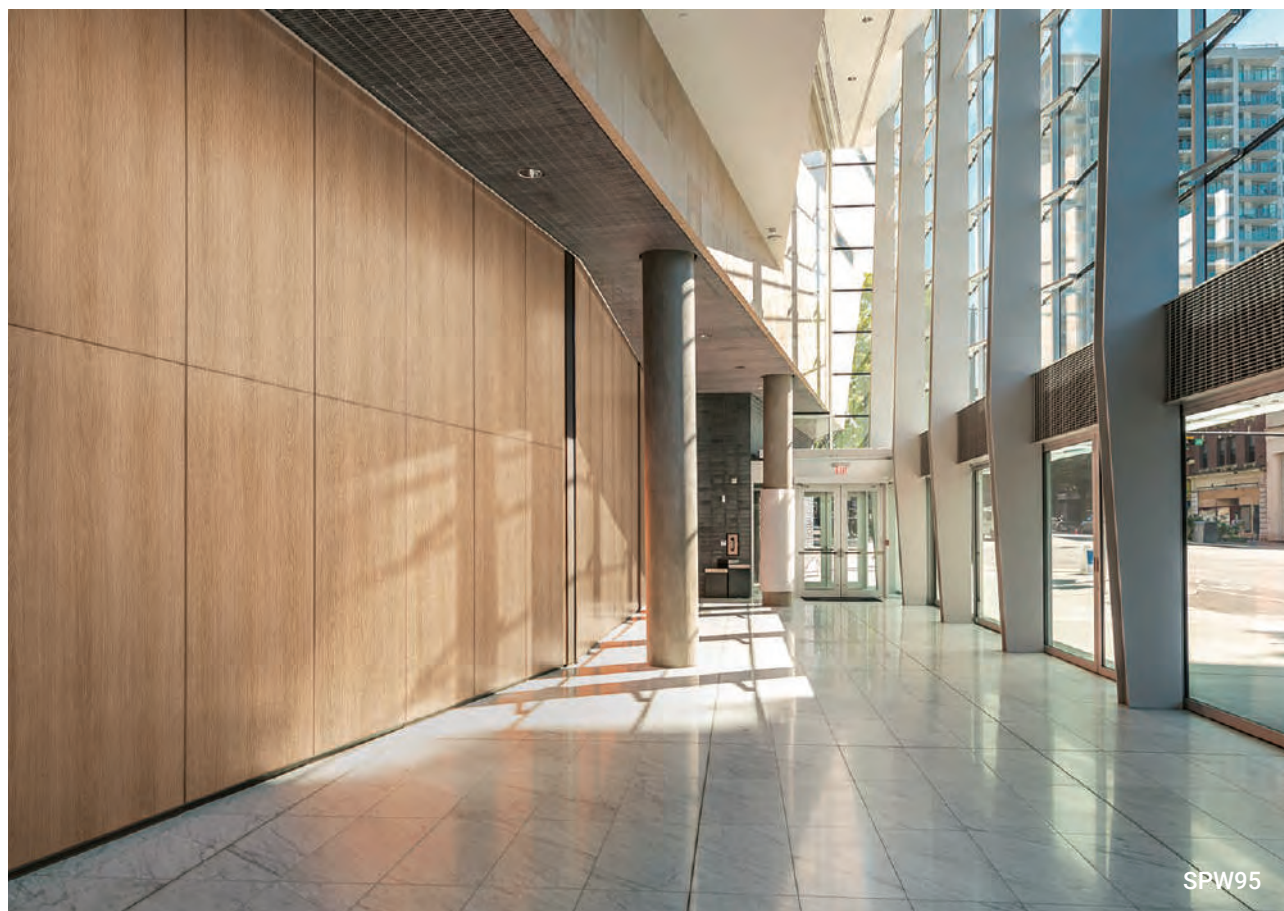
Soft White Oak

● ● SPW94 

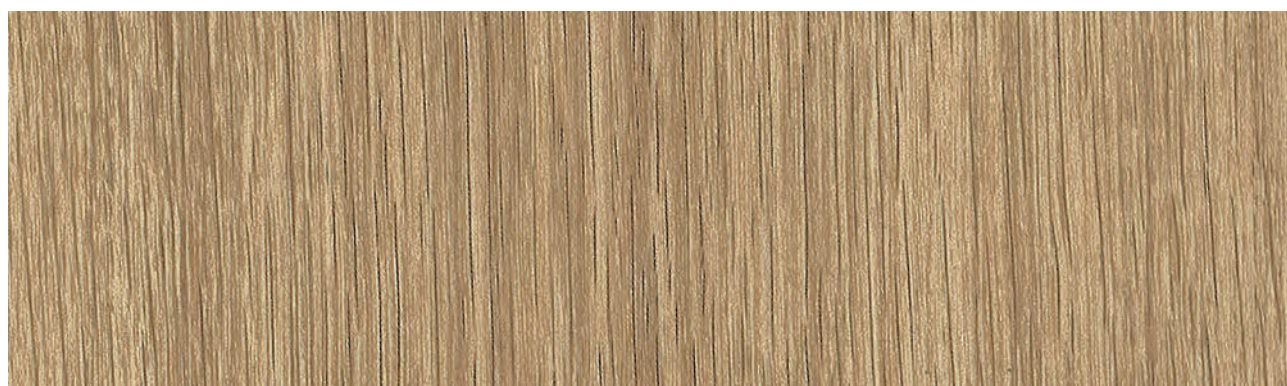


SPW93

● 방염 ● 비방염 ||| Vertical 🌳 Wood grain

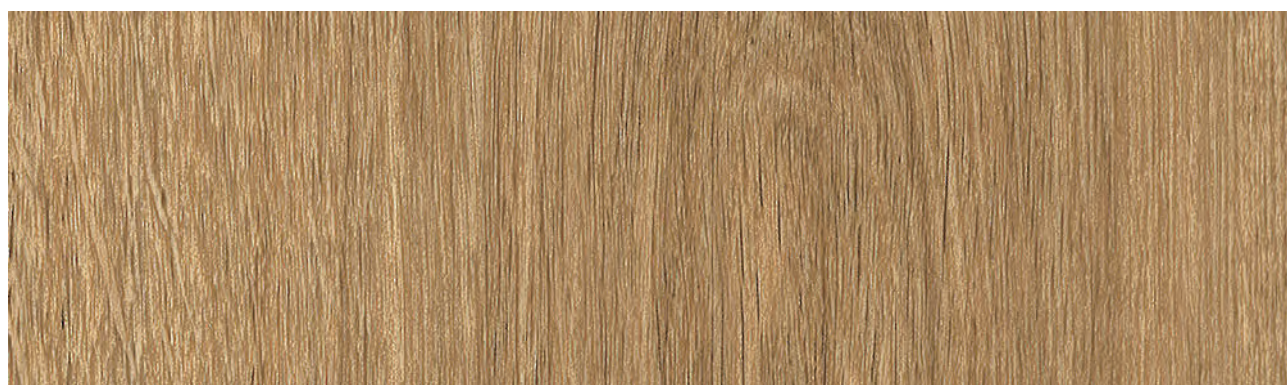


SPW95



Eiche

● ● SPW95 🌳



Eiche

● ● SPW96 🌳

※ 상기 이미지는 이해를 돕기 위한 것으로 실제 제품과 상이할 수 있습니다.

Origin Wood



Split Wood

● ● SPW49 



Split Wood

● ● SPW50 



SPW50

● 방염 ● 비방염 ||| Vertical 🌲 Wood grain



SPW73



Walnut

● ● SPW73 🌲



Walnut

● ● SPW72 🌲

※ 상기 이미지는 이해를 돕기 위한 것으로 실제 제품과 상이할 수 있습니다.

Origin Wood



Walnut

● ● SPW51 |||



Walnut

● ● SPW52 |||



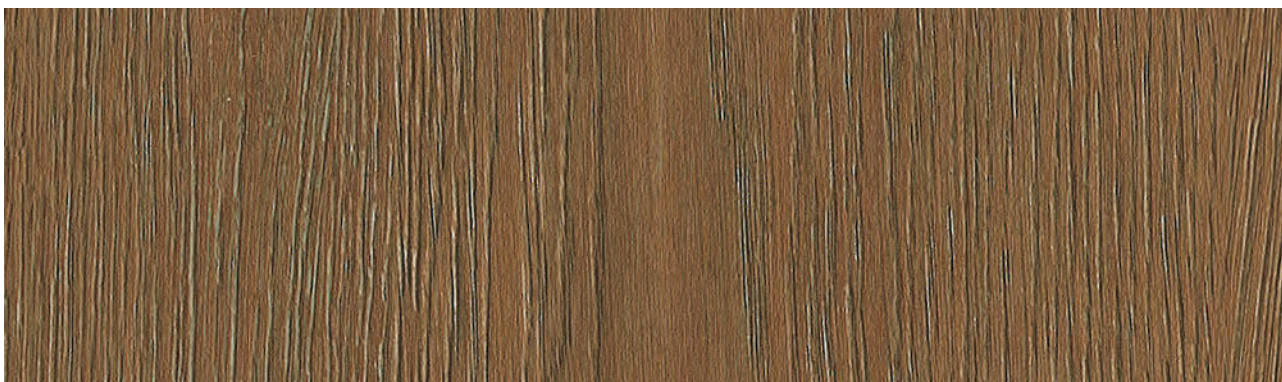
SPW52

● 방염 ● 비방염 ||| Vertical 🌲 Wood grain



Dark Oak

● ● SPW19 🌲



Dark Oak

● ● SPW20 🌲

※ 상기 이미지는 이해를 돕기 위한 것으로 실제 제품과 상이할 수 있습니다.

Origin Wood



Walnut

● ● SPW47 



Walnut

● ● SPW48 



SPW47

● 방염 ● 비방염 ||| Vertical 🌲 Wood grain

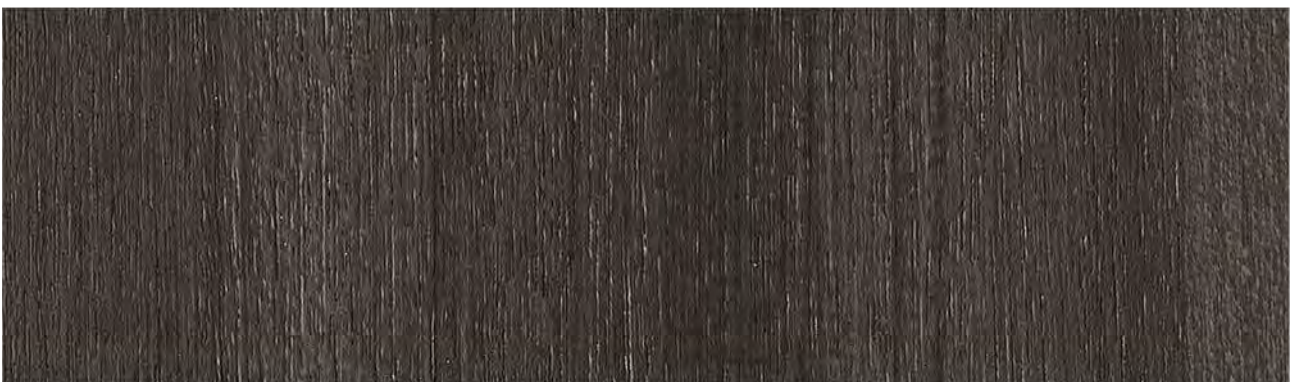


SPW41 · SPW42



Teak

● ● SPW41 |||



Teak

● ● SPW42 |||

※ 상기 이미지는 이해를 돕기 위한 것으로 실제 제품과 상이할 수 있습니다.

Premium Wood



Oak ●● ZX161 🏠



Oak **NEW** ●● ZX171 🏠



Ash ●● ZX103 |||



Sycamore ●● ZX142 |||



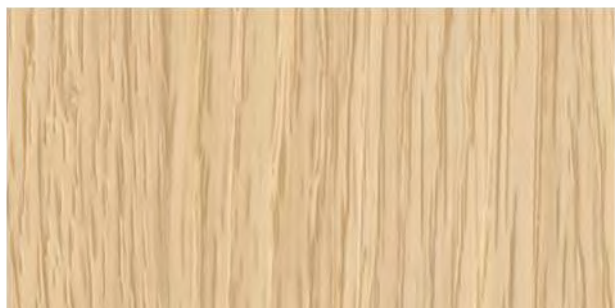
Wizard Grain ●● ZX101 |||



Maple ●● ZX153 |||



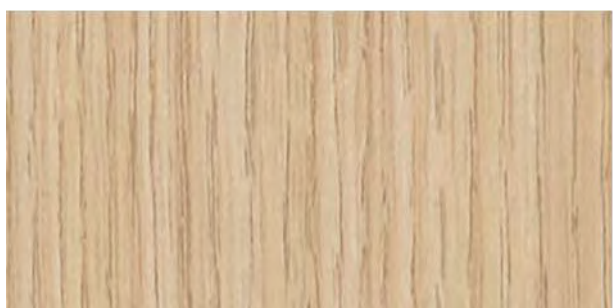
Cherry ●● ZX155 |||



Oak ●● ZX163 🏠



Oak ●● ZX162 🏠



Oak ●● ZX144 |||

천연 그대로의 우드를 재현하여 시각적인 아름다움뿐만 아니라 손끝에서 느껴지는 촉감까지 디테일이 살아있는 프리미엄 우드로 자연과 함께 숨 쉬는 친자연적인 생활공간을 경험해 보세요.

● 방염 ● 비방염 ||| Vertical 🌲 Wood grain



Teak

NEW ● ● ZX178 🌲



Ash

NEW ● ● ZX176 🌲



Ash

● ● ZX159 🌲



Oak

● ● ZX165 🌲



Pine

● ● ZX170 🌲



Oak

● ● ZX166 🌲

※ 상기 이미지는 이해를 돕기 위한 것으로 실제 제품과 상이할 수 있습니다.

Premium Wood



Oak ●● ZX152 |||



Elm ●● ZX150 |||



Eiche ●● ZX113 🏠



Wizard Grain ●● ZX102 |||



Ash **NEW** ●● ZX177 🏠



Oak **NEW** ●● ZX172 🏠



Oak ●● ZX145 |||



● 방염 ● 비방염 ||| Vertical 🏠 Wood grain



Ash

● ● ZX156 |||



Oak

● ● ZX107 🏠



Eiche

● ● ZX114 🏠



Oak

● ● ZX105 🏠



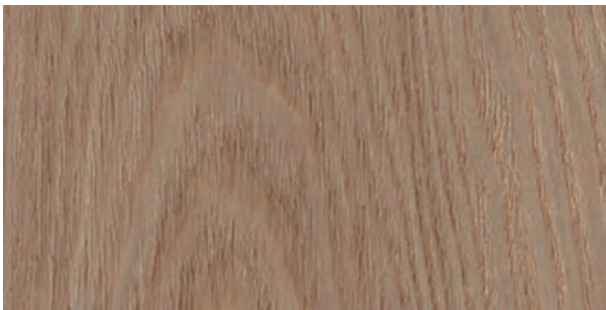
Ash

● ● ZX110 🏠



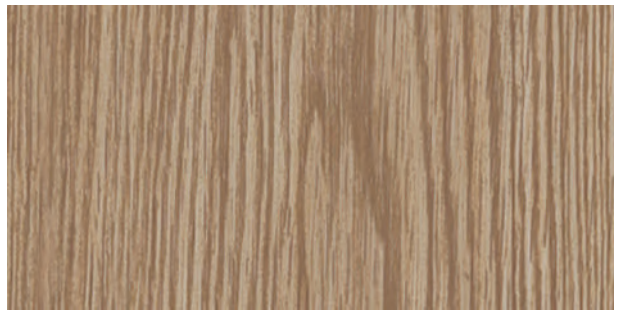
Oak

● ● ZX108 🏠



Oak

● ● ZX131 🏠



Pine

● ● ZX111 🏠



Walnut

● ● ZX149 🏠



Wash Oak

● ● ZX137 🏠

Premium Wood



Ash

● ● ZX109



Oak

● ● ZX117



Ash

● ● ZX140

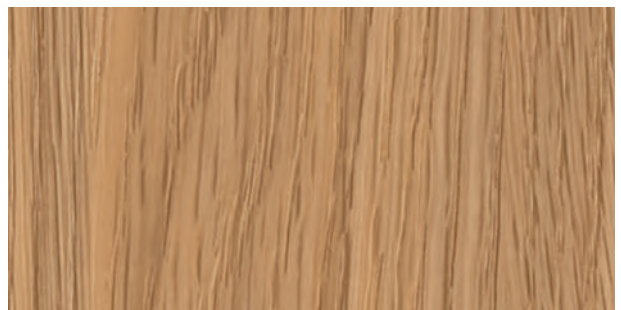


Apple

● ● ZX130 |||



ZX109



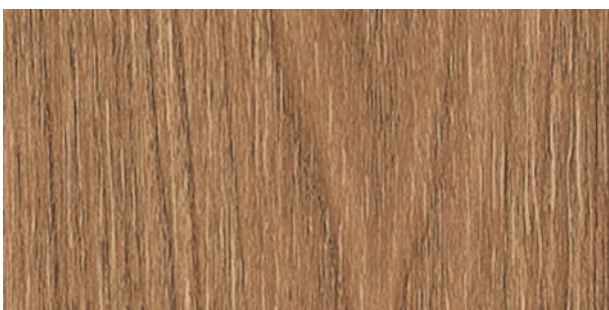
Oak

● ● ZX164



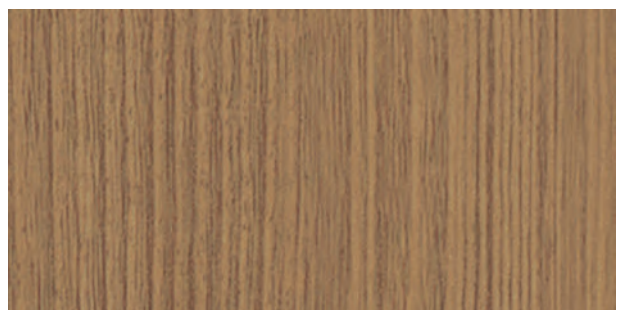
Oak

● ● ZX123



Walnut

● ● ZX119



Teak

● ● ZX104 |||

● 방염 ● 비방염 ||| Vertical 🌲 Wood grain



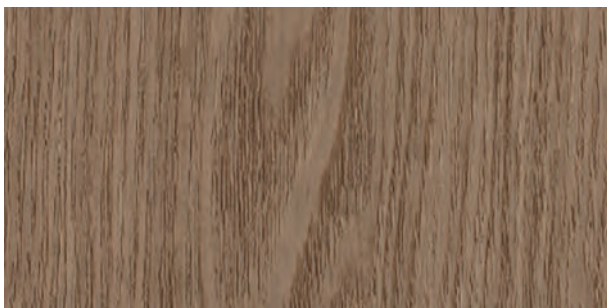
Oak

NEW ● ● ZX173 🌲



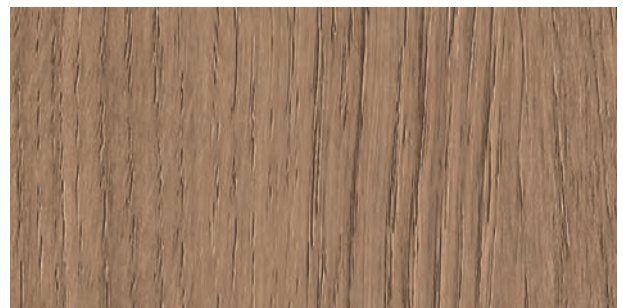
Pine

● ● ZX169 🌲



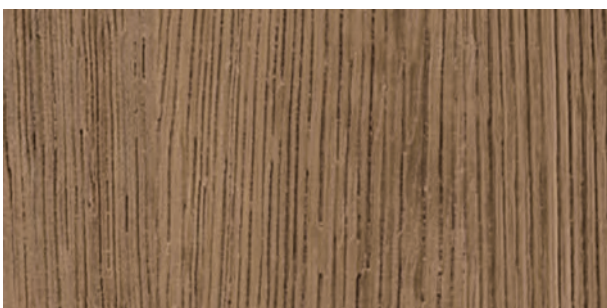
Oak

● ● ZX132 🌲



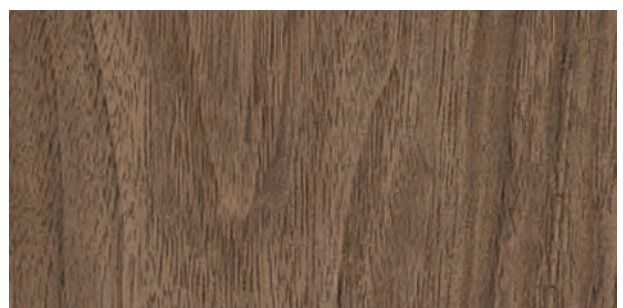
Oak

● ● ZX154 |||



Oak

● ● ZX124 🌲



Walnut

● ● ZX158 🌲

※ 상기 이미지는 이해를 돕기 위한 것으로 실제 제품과 상이할 수 있습니다.

Premium Wood



Walnut

● ● ZX151 |||



Teak

● ● ZX118 |||



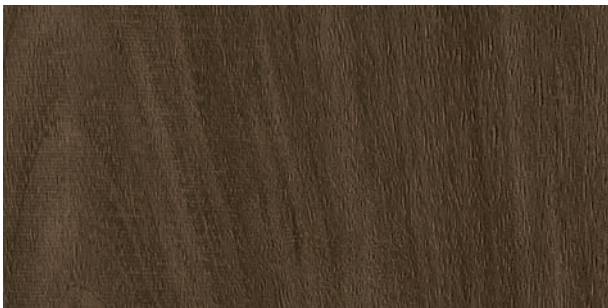
Walnut

● ● ZX129 🏠



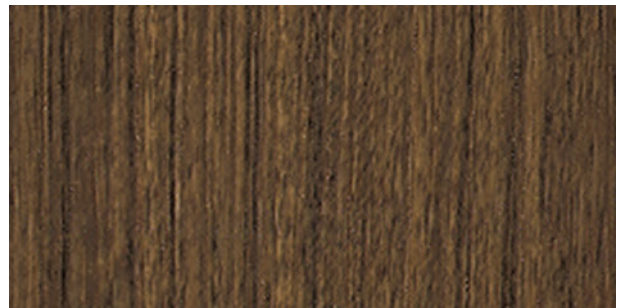
Walnut

● ● ZX126 🏠



Walnut

NEW ● ● ZX175 🏠



Amazahoue

● ● ZX116 |||



ZX175

● 방염 ● 비방염 ||| Vertical 🌲 Wood grain



Oak

● ● ZX133 🌲



Oak

NEW ● ● ZX174 🌲



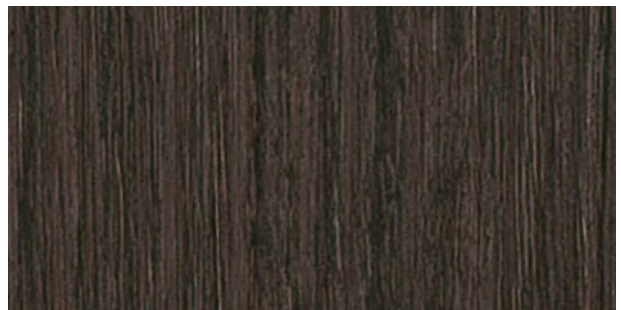
Ash

● ● ZX141 🌲



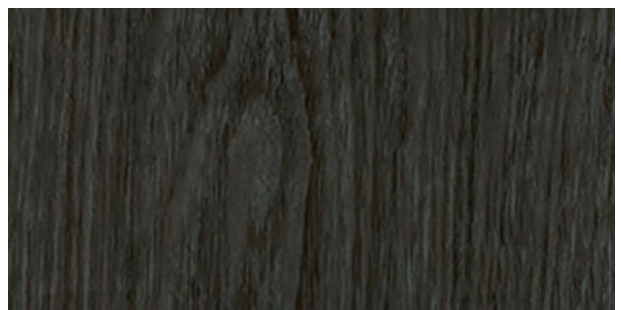
Oak

● ● ZX125 🌲



Oak

● ● ZX157 🌲



Oak

● ● ZX134 🌲

※ 상기 이미지는 이해를 돕기 위한 것으로 실제 제품과 상이할 수 있습니다.

Standard Wood



Oak

● ● W198 🏠



Oak

● ● W012 |||



Oak

● ● W933 🏠



Maple

● ● W189 🏠



Cedar

● ● W946 |||



Oak

● ● W863 🏠



Wash Oak

● ● W011 🏠



Maple

● ● W935 🏠



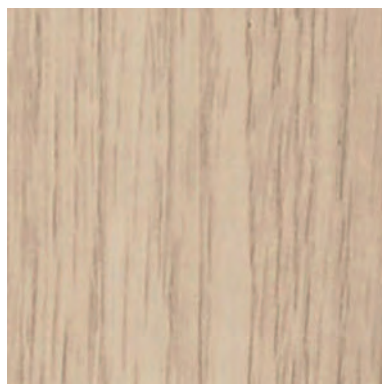
Ash

● ● W389 🏠



Ash

● ● W196 🏠



Oak

● ● W937 🏠



White Oak

● ● W351 |||

우드 본연의 아름다운 패턴과 질감이 공간과 자연스럽게 어우러지는 스탠다드 우드로 나무의 다양한 표정을 느껴보세요.

● 방염 ● 비방염 ||| Vertical 🌲 Wood grain



Castagno Cadduci ● ● W301 🌲



Maple ● ● W200 🌲



Ash ● ● W879 🌲



Elm ● ● W877 🌲



Oak ● ● W878 🌲



Maple ● ● W401 🌲

※ 상기 이미지는 이해를 돕기 위한 것으로 실제 제품과 상이할 수 있습니다.

Standard Wood



Maple

● ● W134 🏠



Sycamore

● ● W531 🏠



Ash

● ● W390 🏠



Noce

● ● W504 🏠



Oak

● ● W874 🏠



W874



Ash

● ● W881 🏠



Teak

● ● W870 |||



Oak

● ● W864 🏠

● 방염 ● 비방염 ||| Vertical 🌲 Wood grain



Wash Oak

● ● W375 🌲



Oak

● ● W871 🌲



Noce

● ● W528 ||| 🌲



W375



Ash

● ● W388 🌲



Castagno Cadduci

● ● W632 🌲



Castagno Cadduci

● ● W192 🌲



Ash

● ● W357 🌲



Oak

● ● W943 🌲

※ 상기 이미지는 이해를 돕기 위한 것으로 실제 제품과 상이할 수 있습니다.

Standard Wood



Pine ●● W538 🏠



Sycamore ●● W845 🏠



Pine ●● W183 |||



Oak ●● W949 🏠



Oak ●● W867 🏠



Maple ●● W842 🏠



Oak ●● W942 🏠



Africa Limba ●● W177 🏠



Noce ●● W508 🏠



Ash ●● W880 🏠



Walnut ●● W141 🏠



Maple ●● W171 🏠

● 방염 ● 비방염 ||| Vertical 🌲 Wood grain



Rose Wood ● ● W727 |||



Walnut ● ● W206 |||



Walnut ● ● W376 🌲



Walnut ● ● W681 |||



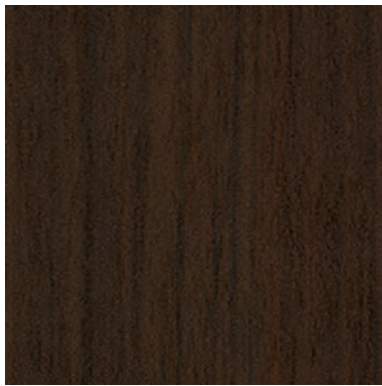
Walnut ● ● W302 🌲



Cherry ● ● W816 🌲



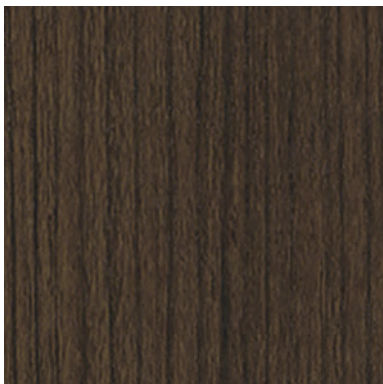
Noce ● ● W823 🌲



Walnut ● ● W207 |||



Walnut ● ● W260 |||



Oak ● ● W638 |||



Noce ● ● W722 🌲



Noce ● ● W705 🌲



03

NATURAL SURFACE

—
Velvet Metal
UMI
Real Metal
Natural Fabric
Real Fabric
Deep Emboss
Fabric & Gold

A dramatic space highlighting the attractiveness of natural materials through a unique texture. Bodaq NS series is the premium line of products that reinterpreted various textures and colors from nature, such as stone, fabric and metal, from a modern perspective. The natural but occasionally classic atmosphere will dramatically change the space you occupy.

Natural Surface.



빛으로 완성되는 모더니즘의 절정. 메탈의 아름다움을 가장 풍부하게 표현한 UMI 메탈의 글래머러스한 매력을 느껴보세요.



Shiny Rookie

● UMI01



Shiny Rookie

● UMI02



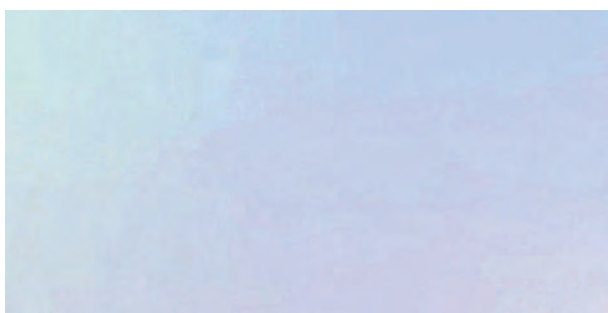
UMI01 · UMI02

※ 상기 이미지는 이해를 돕기 위한 것으로 실제 제품과 상이할 수 있습니다.

새롭게 선보이는 UMI 홀로그램의 각도에 따라 달라지는 다채로운 색채감을 통해
신비롭고 초현실적인 공간감을 경험해 보세요.

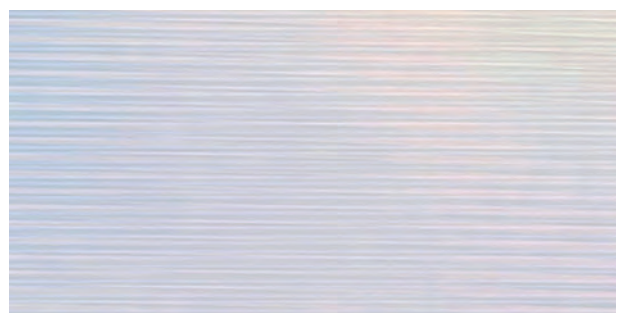
UMI Hologram

● 방염 ● 비방염



Hologram

● UMI05



Hologram

● UMI06



Hologram

● UMI07



Hologram

● UMI08

※ 상기 이미지는 이해를 돕기 위한 것으로 실제 제품과 상이할 수 있습니다.

Real Metal



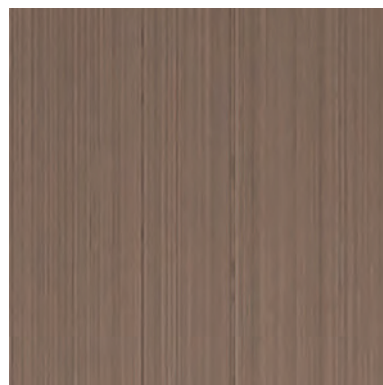
Real Metal ●● RM015



Real Metal ●● RM012



Real Metal ●● RM013



Real Metal ●● RM011

RM011

보닥만의 기술과 노하우로 제작된 리얼 메탈 시리즈는 메탈이 갖는 독특함과 빛나는 아름다움을 선사합니다.
엘레베이터나 창호, 가구 도어 등 주거에서 상업 공간에 이르기까지 세련된 분위기를 더해줍니다.

● 방염 ● 비방염



Real Metal ● ● RM007



Real Metal ● ● RM003



Real Metal ● ● RM008



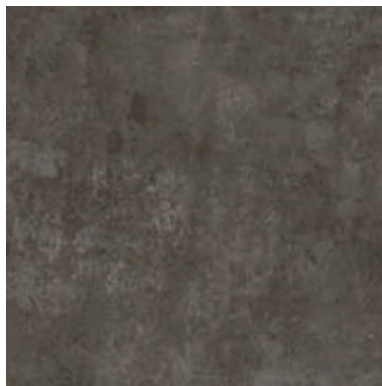
Real Metal ● ● RM051



Real Metal ● ● RM004



Real Metal ● ● RM005



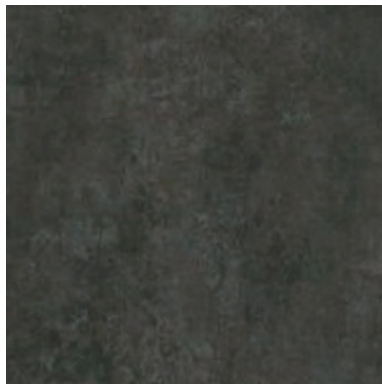
Patina Metal ● ● NS601



Real Metal ● ● RM002



Real Metal ● ● RM006



Patina Metal ● ● NS602



Real Metal ● ● RM009



Real Metal ● ● RM001

Natural Fabric



NF902

*상기 이미지는 이해를 돕기 위한 것으로 실제 제품과 상이할 수 있습니다

실제 원사를 직조하여 제작한 천연패브릭 시리즈로 보다 따뜻하고 아늑한 공간 연출이 가능하며 한층 더 고급스러운 실내 분위기를 선사합니다.

● 방염 ● 비방염



Natural Fabric

NEW ● NF901



Natural Fabric

NEW ● NF902



Natural Fabric

NEW ● NF903



RF010

※상기 이미지는 이해를 돕기 위한 것으로 실제 제품과 상이할 수 있습니다.

보닥 리얼 패브릭 시리즈는 PVC 원사를 씨실과 날실 하나하나 엮어 만드는 직조 방식으로 제작하여 패브릭 특유의 자연스러운 질감과 내구성까지 갖춘 제품입니다.

● 방염 ● 비방염



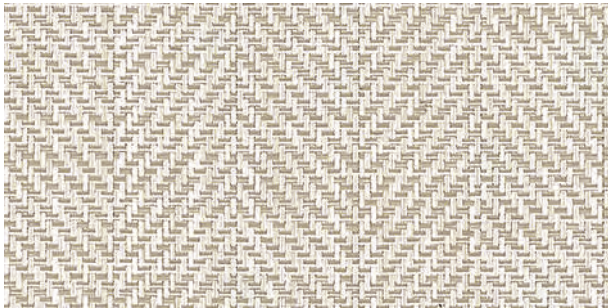
Real Fabric

● RF011



Real Fabric

● RF010



Real Fabric

● RF008



Real Fabric

● RF001



※ 상기 이미지는 이해를 돕기 위한 것으로 실제 제품과 상이할 수 있습니다.

Deep Emboss



TNS07



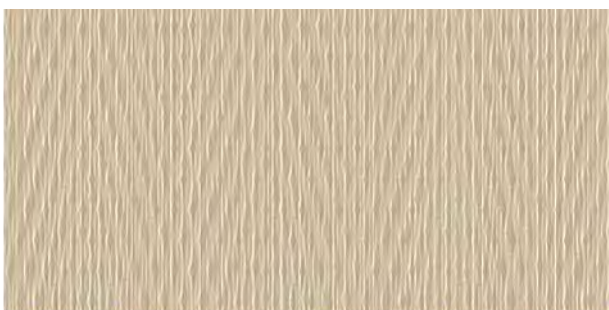
Deep Emboss Weaving

● TNS10



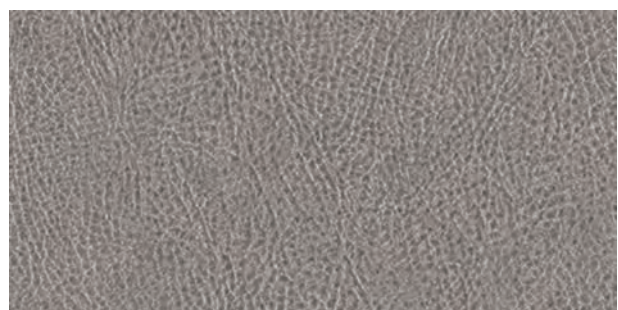
Deep Emboss Leather

● TNS05



Deep Emboss Fabric

● TNS07



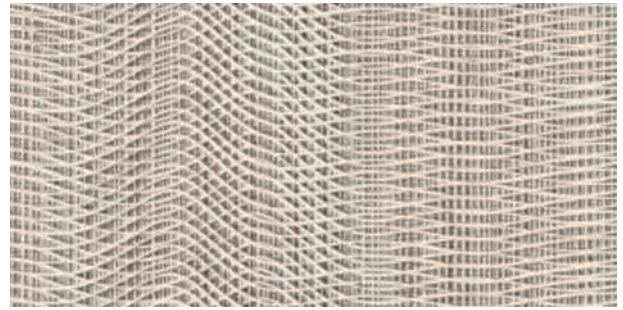
Deep Emboss Leather

● TNS03

● 방염 ● 비방염

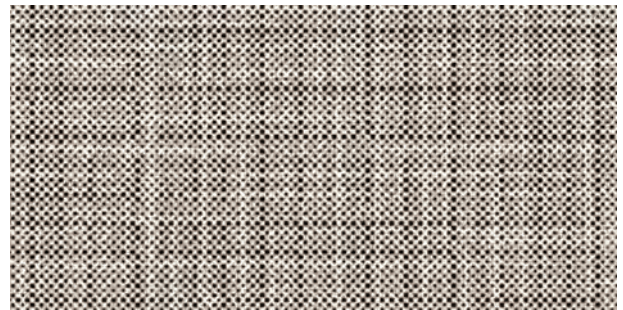


NS820



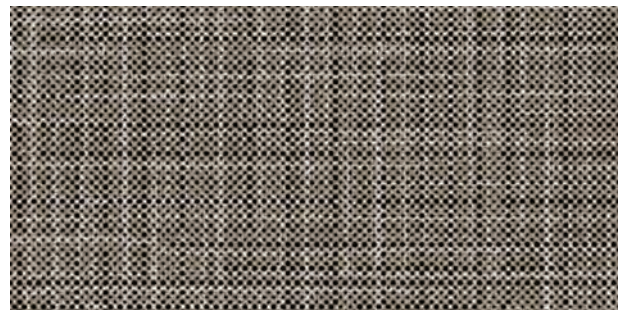
Dual Wave

● ● NS809



Metallic Fabric

● ● NS821



Metallic Fabric

● ● NS820



Golden Fabric

● ● APZ25



Golden Fabric

● ● APZ26



Gold Crack

● ● APZ05



Metal Weave

● ● APZ18

04

STONE & MARBLE

Premium Marble
Stone & Marble



Identical structure, identical in size.

But once the door opens,
a completely different space is revealed.

The difference is all in the interior! From a place that
everyone knows to a place everyone wants to live in.

Upgrade your interior with Bodaq Stone & Marble one that
will make you feel like you made the right choice
even with the smallest element.



Premium Marble



PM019



Venato

NEW ●● PM019

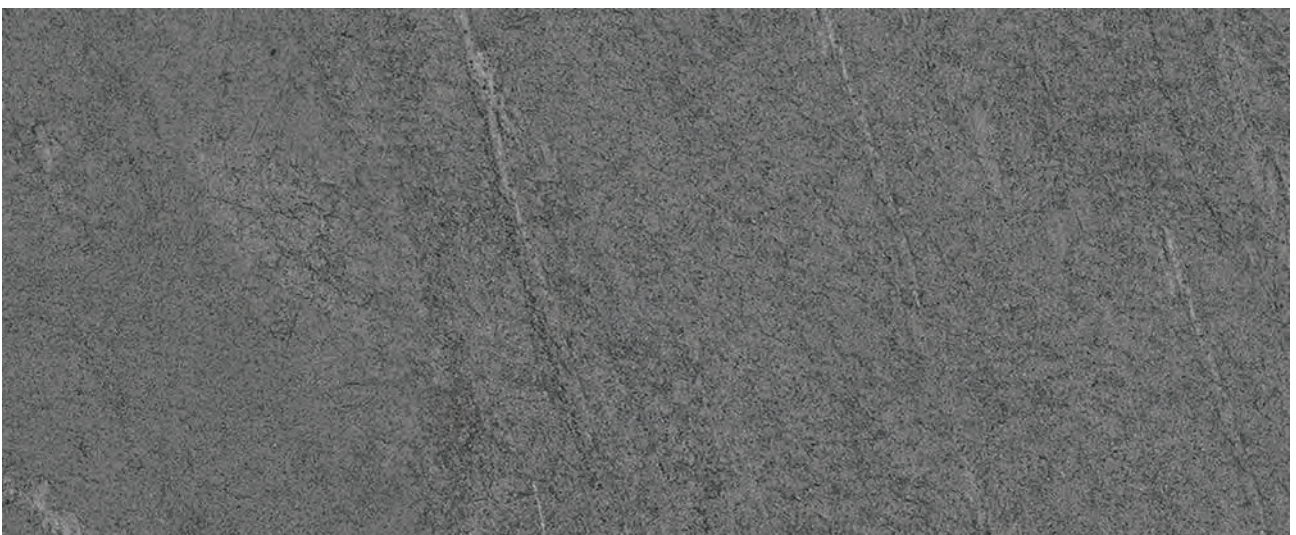
엘레강스한 매력으로 꾸준히 사랑받아온 마블 패턴이 더욱 리얼한 모습으로 업그레이드됩니다. 기존 마블 표면에 혁신적인 코팅 기술을 적용하여 시각적인 만족감을 더한 프리미엄 마블은 마치 새틴처럼 파우더리하게 샌딩 된 석재의 표면이 사실감 있게 구현되어 촉감에서도 고급스러움이 느껴집니다.

● 방염 ● 비방염



Basaltina

● ● PM010



Basaltina

● ● PM009

※ 상기 이미지는 이해를 돕기 위한 것으로 실제 제품과 상이할 수 있습니다.

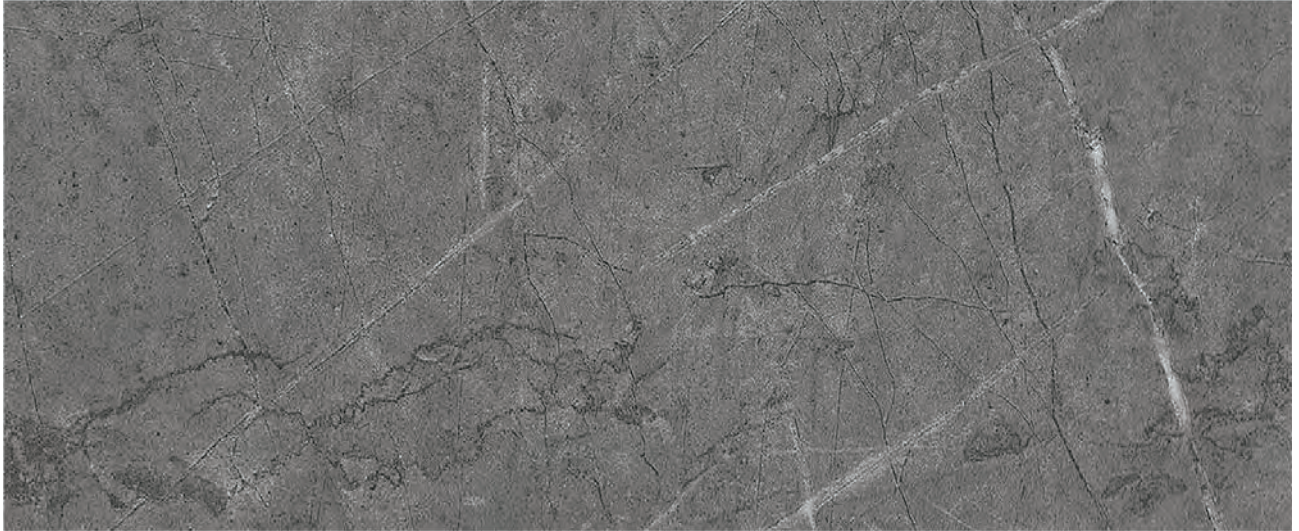
Premium **Marble**



Onyx

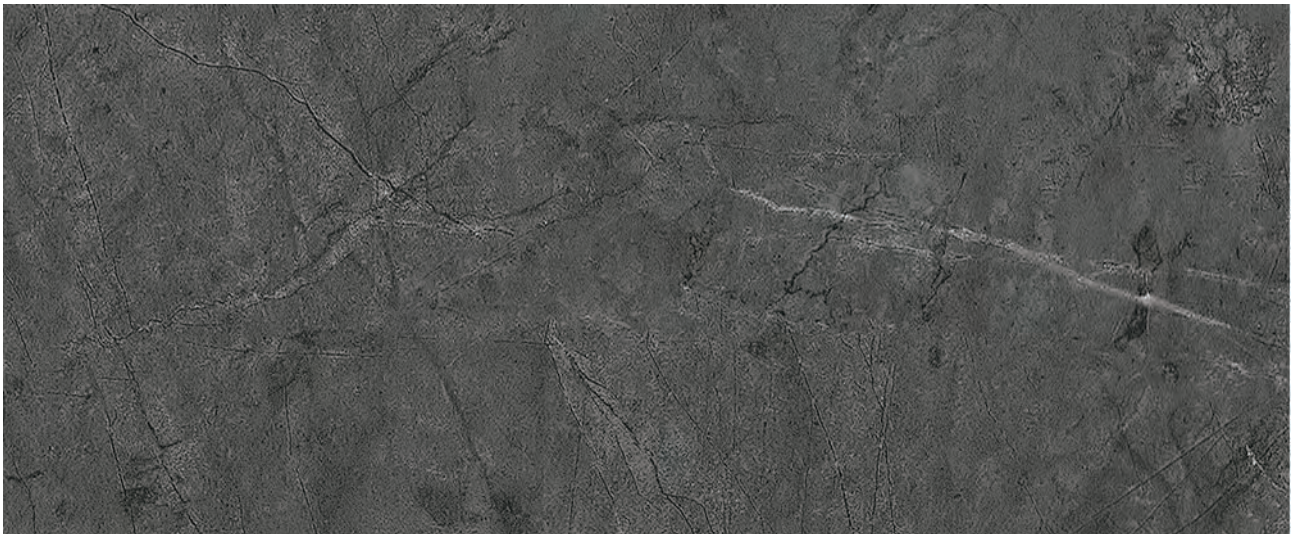
● ● PM003

● 방염 ● 비방염



Pietra

● ● PM006



Pietra

● ● PM007



※ 상기 이미지는 이해를 돕기 위한 것으로 실제 제품과 상이할 수 있습니다.

PM007

Premium Marble



Terrazzo

● ● PM008



Terrazzo

● ● PM004



PM008

● 방염 ● 비방염



PM016



Fior di Bosco

● ● PM016

※ 상기 이미지는 이해를 돕기 위한 것으로 실제 제품과 상이할 수 있습니다.

Premium **Marble**



Bianco

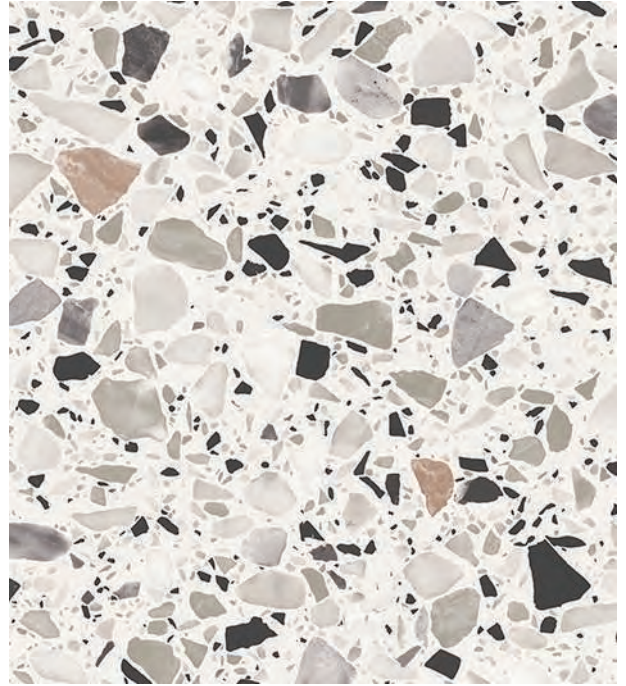
● ● PM017

● 방염 ● 비방염



Terrazzo

● ● PM011



Terrazzo

● ● PM012



PM011

Premium **Marble**

● 방염 ● 비방염



Tundra

● ● PM014



PM014



NS123



Sierra Stone

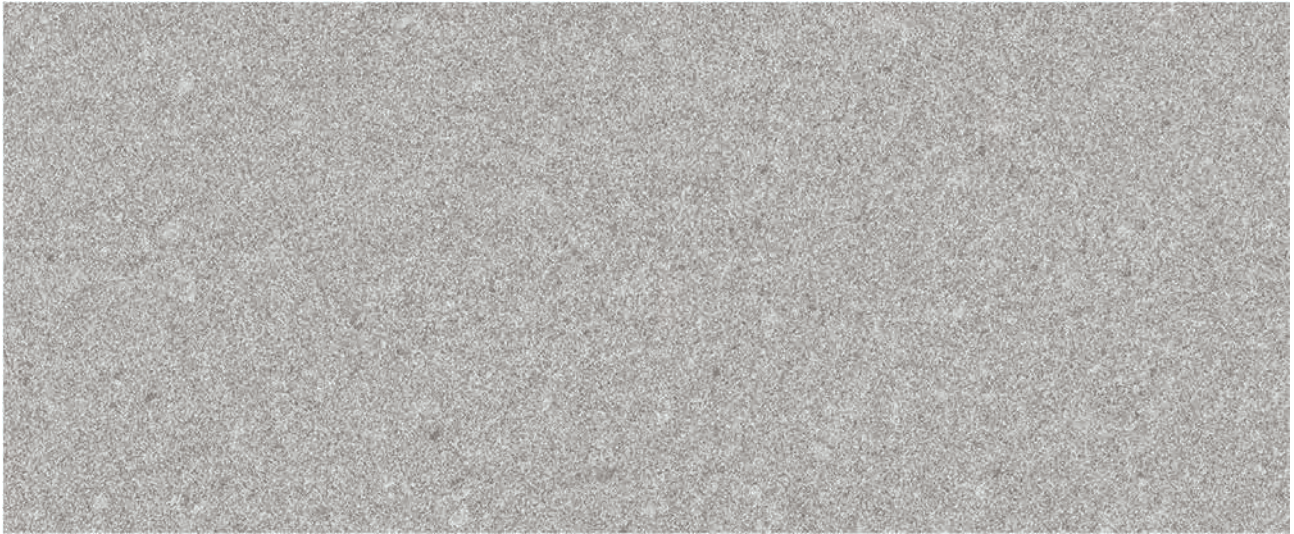
NEW ●● NS122



Sierra Stone

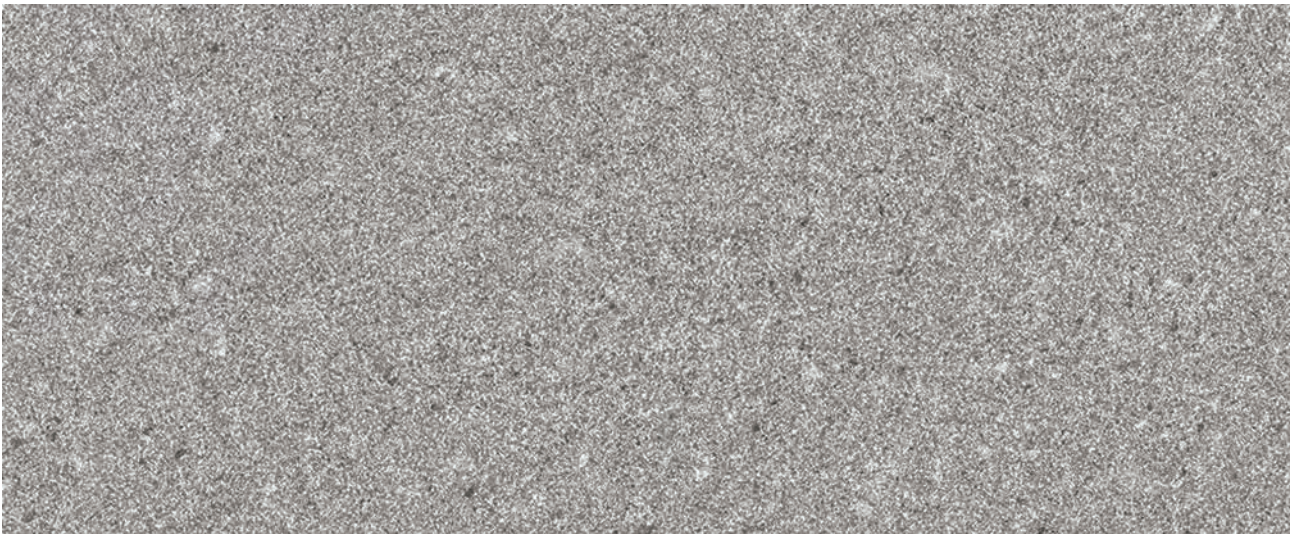
NEW ●● NS123

Stone & Marble



Elba Stone

NEW ●● NS822

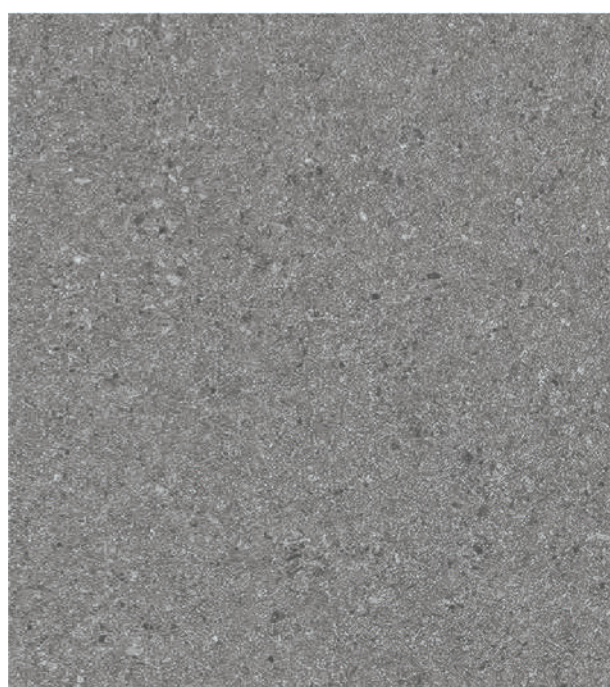


Elba Stone

NEW ●● NS823



NS823



Particle Stone

NEW ● ● NS716



Particle Stone

NEW ● ● NS717

※상기 이미지는 이해를 돕기 위한 것으로 실제 제품과 상이할 수 있습니다.

Stone & Marble



Arabescato

● ● NS814



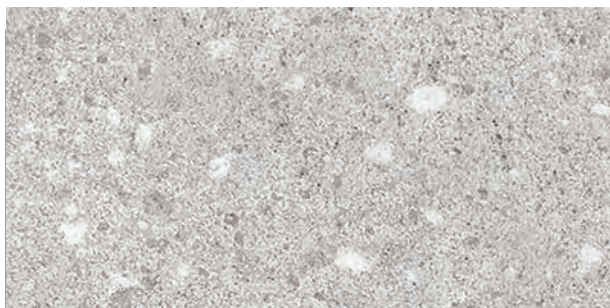
Arabescato

● ● NS815

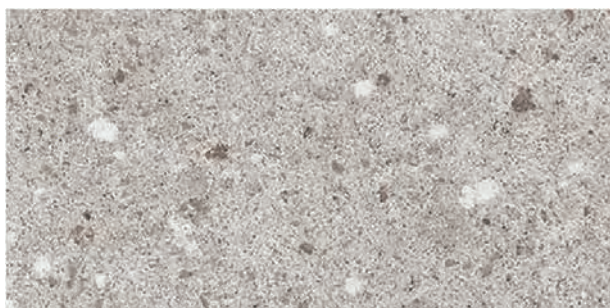


NS814 · PTW03

● 방염 ● 비방염



Flake Cement ● ● NS898



Flake Cement ● ● NS899



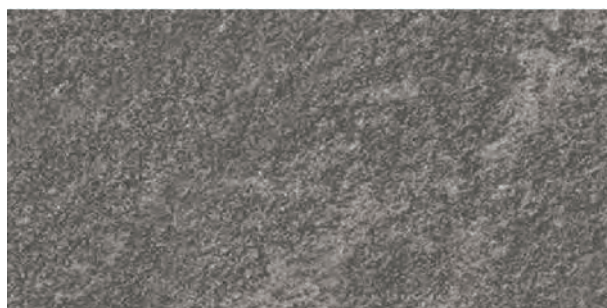
NS899



NS711



Cardoso ● ● NS711



Cardoso ● ● NS710

※ 상기 이미지는 이해를 돕기 위한 것으로 실제 제품과 상이할 수 있습니다.

Stone & Marble



Granite

● ● NS121



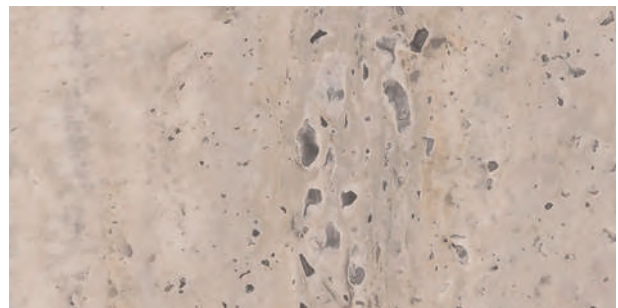
White Marble

● ● NS119



Granite

● ● NS120



Travertine

● ● NS806



NS121



NS715



Color Terrazzo

● ● NS708



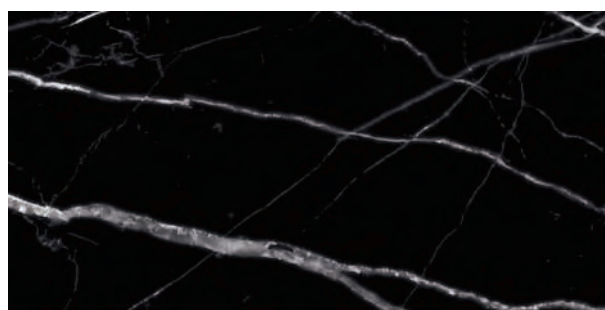
Mono Terrazzo

NEW ● ● NS715



White Marble

● ● NS118



Nero Marquina

● ● NS804

Stone & Marble

● 방염 ● 비방염



NS703 · NS705



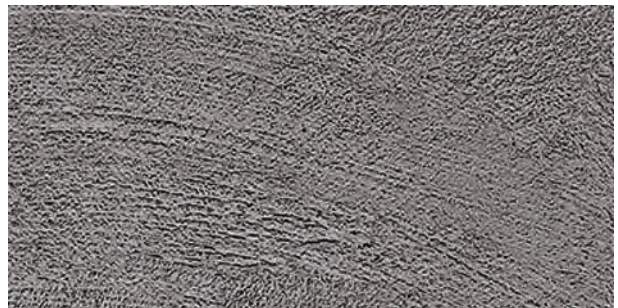
Concrete

● ● NS401



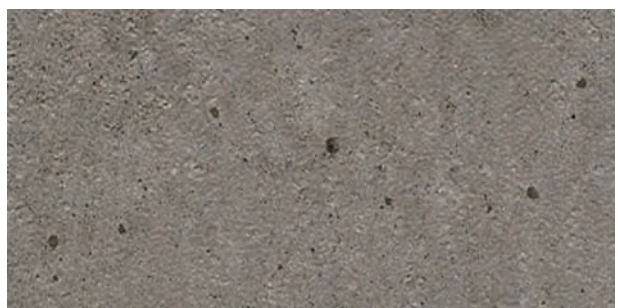
Cement

● ● NS703



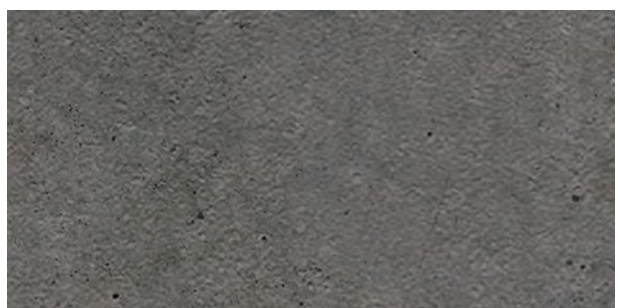
Cement

● ● NS705



Concrete

● ● NS402



Concrete

● ● NS403

2024 — 2025

HYUNDAI L&C Bodaq

HYUNDAI L&C NEW COLLECTION

Creative and Environmental
Interior Solution Provider

INTERIOR FILM

HYUNDAI 현대 L&C